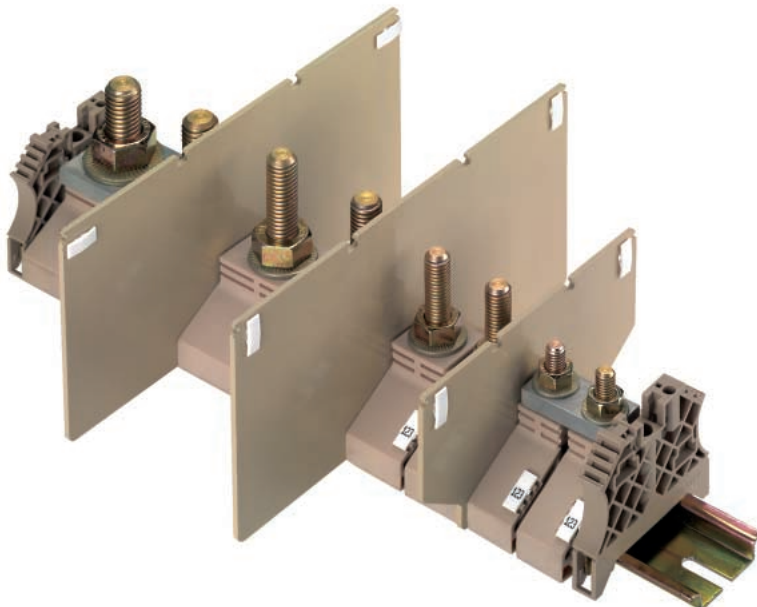


Stud terminal

WF 5

NEW



The WF 5 is considered as addition to the very successful stud terminal family, that is to be found already in many applications of the traffic and process technology.

- Connection on a M5 stud
- Max. connection 16 mm² (DIN 46234)
- Very slim design, only 13 mm
- Very good to be cross connected, since all terminals have the same overall height
- Material “V0” and “Low smoke emission” classifications
- A continuous system with partitions, cross connection links, standard marking possibilities and protective covers
- Further sizes in M6, M8, M10 and M12

United Kingdom

Weidmüller Ltd.
1 Abbey Wood Road, Kings Hill
West Malling, Kent ME19 4YT
Phone +44 1732-877032
Fax +44 1732-873873
info@weidmuller.co.uk
<http://www.weidmueller.com>

USA

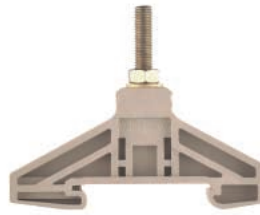
Weidmüller Inc.
21 Southlake Boulevard
Richmond, Virginia 23236
Phone +1 804-7942877
Fax +1 804-3792593
info@weidmuller.com
<http://www.weidmuller.com>

Other countries


Weidmüller Interface GmbH & Co.
Postfach 3030
32720 Detmold
Phone +49 5231-14-0
Fax +49 5231-14-2083
info@weidmueller.com
<http://www.weidmueller.com>

Stud terminal

WF 5



Dimensions

Width / Length / Height (mm) with TS 35 x 7,5  15 x 67 x 54

Insulation stripping length mm 10

Rated data acc. to IEC 60 947-7-1

Voltage V 1000

Current A 76


Cross-section mm² / AWG ...16

Impulse voltage/pollution severity kV /- 8 / 3

Stud size M5

Tightening torque range Nm 2

Flammability to UL 94 V0

approvals   

Further technical data

Clampable conductor (H05V/H07V):

DIN 46234: 2 KS crimpings on the upper site mm² 0,1 ... 16

2, 3 + 4 KS crimpings on the ground site mm² 16

DIN 46235: 2 KS crimpings on the upper site mm² 6 ... 10

2, 3 + 4 KS crimpings on the ground site mm² 6 ... 10

2 x DIN 46234 per site mm² 6 ... 16

2 x DIN 46235 per site mm² 6 ... 10

Ordering data

dark beige

End plate/partition

Version

dark beige Wemid

(Thickness 2mm)

Cross-connection

Rated current with 16 mm² = 76 A 2-pole

3-pole

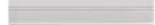


End bracket

dark beige Wemid

Prof. material to cover

Touch safing on the stud area 1000 mm



Safe from finger-touch by covering profile

Cutting 3 pieces of equal suitable length

Pushing side by side into the guidance of the partitions

Clip for cover

to avoid lateral displacement of cover dark beige Wemid

Marking tag

Markers

15 x 67 x 54

10

IEC **UL** **CSA**

1000 1000 1000

76 115 85

...16 AWG 10 ... 5 AWG 10 ... 4

8 / 3

M5

2

V0

Rated connection

0,1 ... 16

16

6 ... 10

6 ... 10

6 ... 16

6 ... 10

Type **Part No.** **Qty.**

WF 5 **1790130000** 25

WTW WF 6-WF 12 **1781240000** 20

WQL 2 WF 5 **1812710000** 5

WQL 2 WF 5 **1812740000** 5

WEW 35/2

AADP WF 5/WF 6/WF 8 **1780930000** 10

HA WF **1781050000** 50

WS 12/5 **1609860000**

