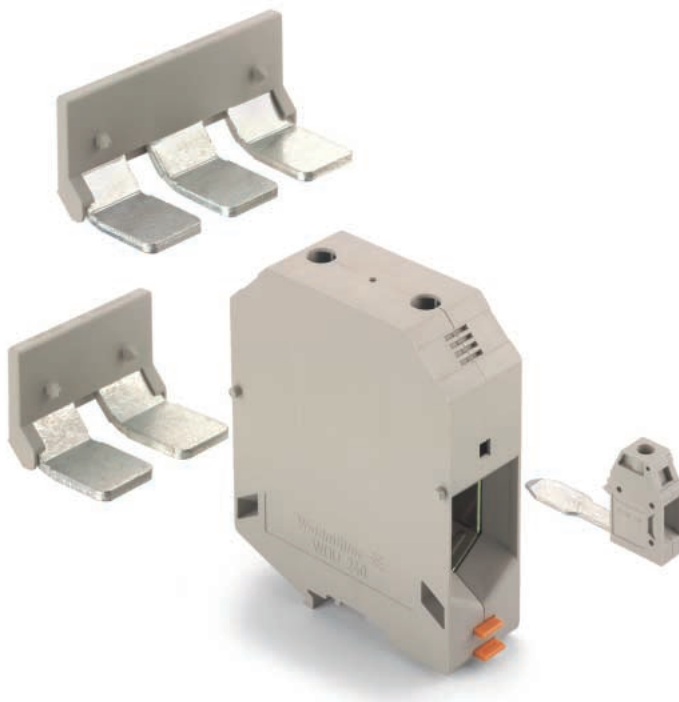


## Feed-through terminals

### W-Series

### WDU 240

# NEW



Line extension W-Series with clamping yoke to 240 mm<sup>2</sup>.

- big clamping ranges
- Wemid (V0 / 120°C)
- comfortable and full isolated auxiliary connection
- 2- and 3-poles external cross-connection
- ATEX- UL-, and CSA-approval

#### United Kingdom

Weidmüller Ltd.  
1 Abbey Wood Road, Kings Hill  
West Malling, Kent ME19 4YT  
Phone +44 1732-877032  
Fax +44 1732-873873  
Info@weidmuller.co.uk  
<http://www.weidmueller.com>

#### USA

Weidmüller Inc.  
821 Southlake Boulevard  
Richmond, Virginia 23236  
Phone +1 804-7942877  
Fax +1 804-3792593  
info@weidmuller.com  
<http://www.weidmuller.com>

#### Other countries

Weidmüller Interface GmbH & Co.  
Postfach 3030  
32720 Detmold  
Phone +49 5231-14-0  
Fax +49 5231-14-2083  
info@weidmueller.com  
<http://www.weidmueller.com>


# Feed-through terminals

## WDU 240



Max. technical data

### Dimensions / approvals

Width/length/height (mm) with TS 35 x 15 

Insulation stripping length/clamping screw/screwdriver blade

### VDE rated data 0611 Part 1/8.92/IEC 60 947-7-1

Rated voltage/current/cross-section

Rated impulse voltage/pollution severity

### Further technical data

Tightening torque range Nm

Torque setting with DMS 2 electric screwdriver

### Clampable conductors

Solid H07V-U mm<sup>2</sup>

Stranded H07V-R mm<sup>2</sup>

Flexible H07V-K mm<sup>2</sup>

Flexible H07V-K and ferrule acc. to DIN 46 228/1 mm<sup>2</sup>

Flexible H07V-K and ferrules with plastic insul. collar mm<sup>2</sup>

Max. clamping range in mm<sup>2</sup>/Gauge pin acc. to IEC 60 947-7-1 Size

Cont. current of cross-connect. WQB 240/2 A

Cont. current of cross-connect. WQB 240/3 A

### UL/CSA rated data

Voltage/current/conductor size UL

Voltage/current/conductor size CSA

### Ordering data Version

Dark beige Wemid

Blue Wemid

### Cross-connection

Cross-connection comb



### Auxiliary

Auxiliary



### Insertion profile

### End bracket

Dark beige Wemid

Metal End bracket

### Test plug/socket/hexagon wrench

IS-Allan key

### Marking tags

Print



DEK Standard

WS white neutral

415 A/240 mm<sup>2</sup>



36/100/131,5

40 mm/M 10<sup>1)</sup>-

1000 V/415 A/240 mm<sup>2</sup>

8 kV / 3

25...30

-

70...240

70...240

70...240

70...185

70...185


B 15

320

320

600 V/380 A/2/0 AWG-500 MCM

600 V/400 A/1/0 AWG-500 MCM

|  | Cat. No.   | Qty |
|--|------------|-----|
| WDU 240  | 1802780000 | 2   |
| WDU 240 bl   | 1822210000 | 2   |

| Type      | Cat. No.   | Qty |
|-----------|------------|-----|
| WQB 240/2 | 1802790000 | 5   |
| WQB 240/3 | 1802800000 | 5   |

|          |                          |   |
|----------|--------------------------|---|
| WZAD 240 | 1802810000 <sup>2)</sup> | 1 |
|----------|--------------------------|---|

|                            |            |    |
|----------------------------|------------|----|
| ELPF WDU 240 <sup>3)</sup> | 1824680000 | 10 |
|----------------------------|------------|----|

|          |            |     |
|----------|------------|-----|
| WEW 35/1 | 1059000000 | 100 |
|----------|------------|-----|

|          |            |    |
|----------|------------|----|
| MEW 35/1 | 1805610000 | 10 |
|----------|------------|----|

|    |            |   |
|----|------------|---|
| IS | 0235000000 | 1 |
|----|------------|---|

|       |  |  |
|-------|--|--|
| DEK 5 | please see sectional Cat. 7 (No. 5629040000) |  |
|-------|--|--|

|         |            |   |
|---------|------------|---|
| WS 15/5 | 1609880000 | 4 |
|---------|------------|---|

Mounting rails, end brackets, further marking materials see sectional catalogue

<sup>1)</sup> Screws with hexagonal socket

<sup>2)</sup> Rated data Auxiliary 1000V/57A/10 mm<sup>2</sup>

<sup>3)</sup> profile compensates the prism-shaped sleeve base when using flat strips (conductors)



## Auxiliary

### function auxiliary

full-isolated auxiliary can be connected very comfortably at a separate connection point