

# Solenoid interlocks AZM 160 range with connector



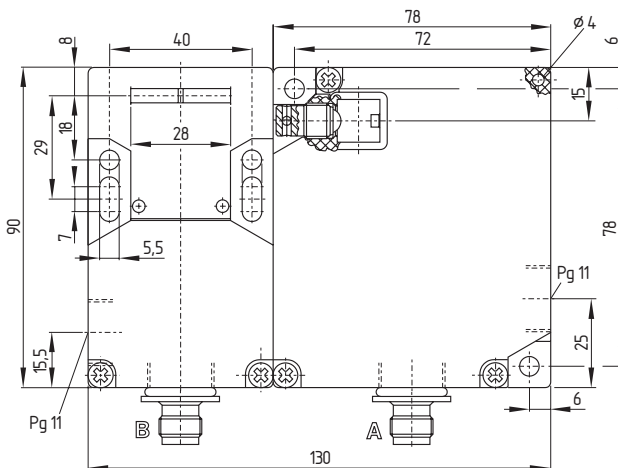
## Features

- Thermoplastic enclosure
- Manual / Emergency release
- Long life
- Double insulated  $\square$
- High holding force 2,000 N
- Adjustable ball latch up to 150 N
- 30 N latching force
- Actuation on de-energisation or energisation
- 2 plug-in and 2 cable entries
- A- and B-coding of the connectors
- Mounting holes in base

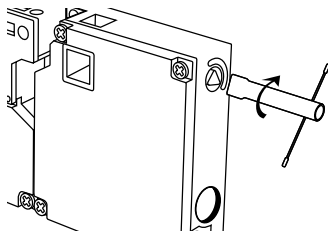
## Voltage variants

- 24 VAC/DC
- 110 VAC
- 230 VAC

Always state required supply voltage when ordering

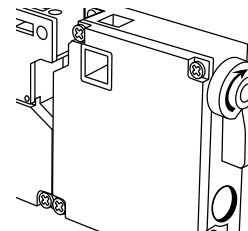


## Manual release



- For manual release using M5 triangular key, available as accessory
- For maintenance, setting-up, etc.

## Emergency release



- For cases of danger
- Fitting only within the guarded area

## Ordering details

Solenoid interlock, actuated on de-energisation, manual release, connector, 2 NO and 2 NC contacts, 24 VAC/DC, including slot sealing plug:  
AZM 160-22yrpk-ST-1476-1 24 VAC/DC

Straight actuator: AZM 160-B1S

# Solenoid interlocks AZM 160 range with connector

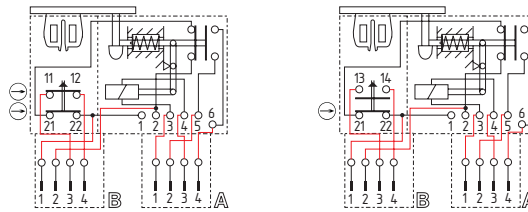


**Notes** On versions with connectors, the A- and B-coding prevents transposition of the connections.  
Suitable connector plugs are available as accessories, see 2.4. Further variants not shown here are available on enquiry.

**Info**

- Available with 5 N latching force, ordering suffix -2254
- With gold-plated contacts (0.3 µm), ordering suffix -1637

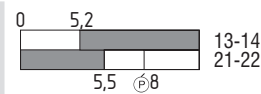
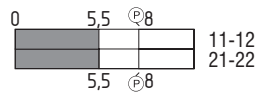
## Actuation on de-energisation



**1 NO  
3 NC**

**2 NO  
2 NC**

## Contacts/ Switch travel

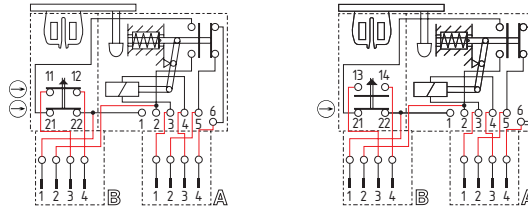


With manual release  
Spring to lock solenoid

**AZM 160-13yrpk-ST  
AZM 161-SK-24RK-voltage**

**AZM 160-22yrpk-ST**

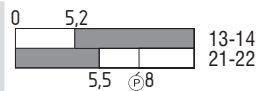
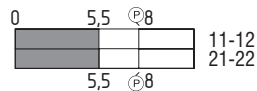
## Actuation on energisation



**1 NO  
3 NC**

**2 NO  
2 NC**

## Contacts/ Switch travel



With manual release  
Spring to lock solenoid

**AZM 160-13yrpk-ST  
AZM 161-SK-24RKA-voltage**

**AZM 160-22yrpk-ST**

**Notes** Circuit diagrams show de-energised condition with actuator inserted (0 in switch travel diagram).  
Interlocks with actuation on energisation may only be used in special cases after a thorough evaluation of the accident risk, since the guarding device can immediately be opened on failure of the electrical power supply or when the main switch is opened.  
Actuators must be ordered separately.  
A selection of suitable actuators can be found in 2.3.  
A selection of suitable connector plugs can be found in 2.4.