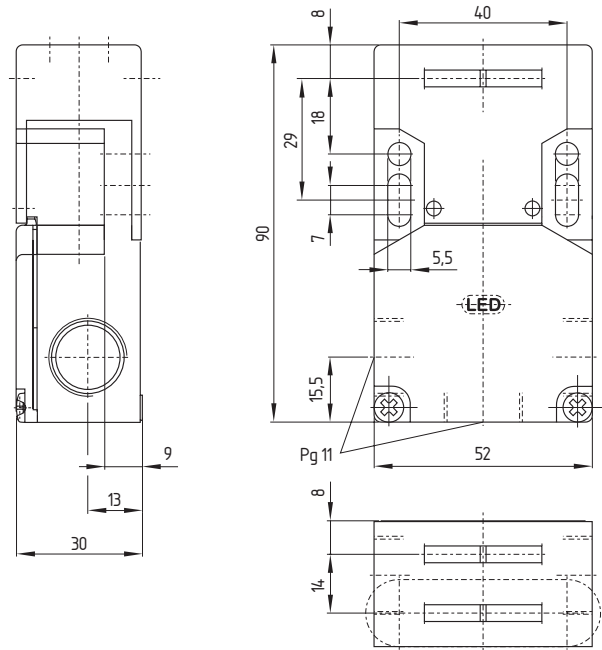


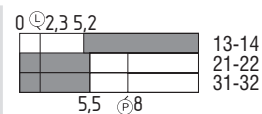
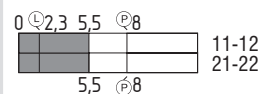
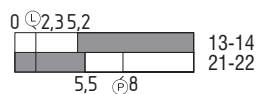
Safety switches with separate actuator / Class 2 AZ 16 range



Features

- Thermoplastic enclosure
- Multiple coding
- Long life
- Double insulated
- 3 cable entries
- Large wiring compartment
- High level of contact reliability with low voltages and currents
- Not sensitive to dirty conditions by virtue of patented roller system
- Available with LED
- Covered switch contacts
- Slotted holes for adjustment, circular holes for location
- EEx version see chapter 14.1.1.1

Contacts/ Switch travel	1 NO		2 NC		1 NO 2 NC		3 NC	
	1 NC							



Ejection force
Latching force
30 N

AZ 16zvkc
AZ 16zvkc

AZ 16-02zvkc
AZ 16-02zvkc

AZ 16-12zvkc
AZ 16-12zvkc

AZ 16-03zvkc
AZ 16-03zvkc

Notes

Inserted position of actuator = 0 in switch travel diagrams.
Actuators must be ordered separately.
A selection of suitable actuators can be found in 1.4.

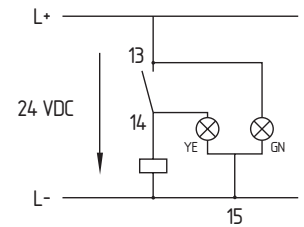
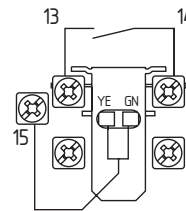
Safety switches with separate actuator / Class 2 AZ 16 range



LED version

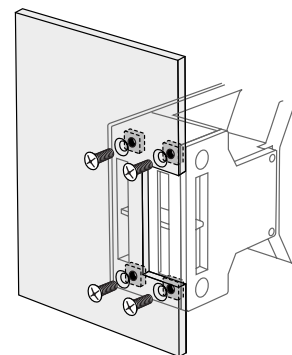
Protected against incorrect polarity and voltage spikes, ordering suffix G24

- only available for version with one NO and one NC contact



Version with M5 nuts

- For front fixing of safety switch, e.g. on sheet-steel covers
- Suitable for use with actuators AZ 15/16-B1, -B2, -B3 and -B6
- Nuts cannot be retrofitted
- Ordering suffix -1762



Ordering details

To order, select the part number of the desired switch from the table "Contacts/Switch travel", e.g. safety switch AZ 16 with one NO and one NC contact, with ejection force and LED insert: AZ 16zvkg24

Actuators and accessories are ordered separately, e.g. straight actuator with centering facility: AZ 15/16-B1-2177

The applicable ordering suffix is added at the end of the part number of the safety switch. Further variants not shown here are available on enquiry.

Info

- With cable entry M 16 x 1.5, ordering suffix -M16
- Available with 5 N latching force, ordering suffix -2254
- With gold-plated contacts (0.3 µm), ordering suffix -1637
- Alignment kit to simplify fitting, part number: Alignment kit AZ 15/16

To safeguard up to Control Category 3 to EN 954-1, the Safety System Package No. 5 can be used. This comprises an AES 1235 guard door monitor, an AZ 16-12zvrk, an AZ 15/16-B1 actuator, a Pg cable gland and tamperproof screws.

To safeguard up to Control Category 4 to EN 954-1, the Safety System Package No. 15 can be used. This comprises an AZR 31 R2 guard door monitor, two AZ 16-12zvrk, two AZ 15/16-B1 actuators, a Pg cable gland and tamperproof screws.

Approvals

