

# LUTZE DIONET - De-centralised Control System

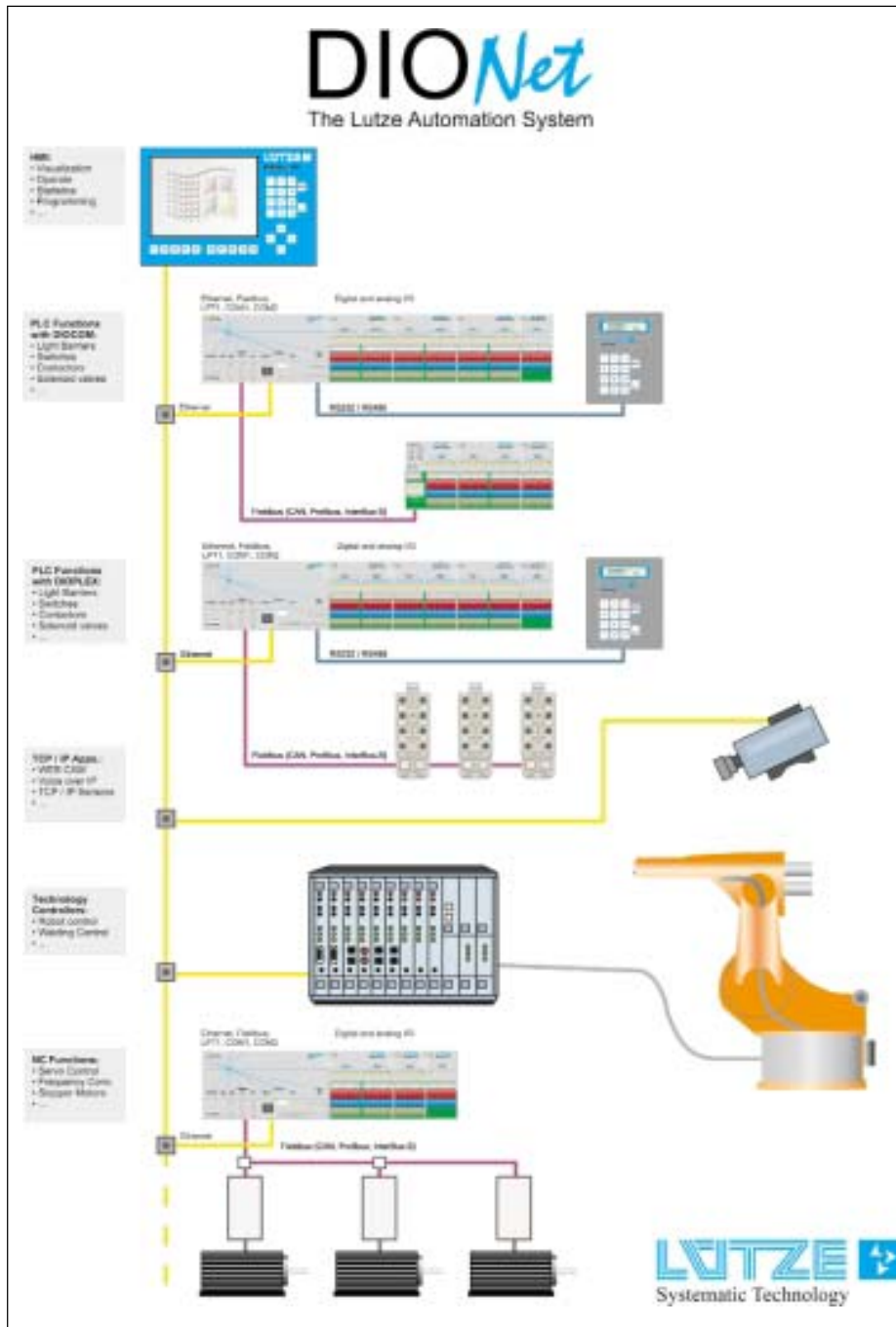
## DIO-PC



## DIOCOM Input/Output Module



- Digital and Analogue Input/Outputs
- Can be connected directly to DIO-PC
- Or alternatively connected to different field bus systems via coupler modules



The Lutze Dio PC is an IBM-compatible control PC for decentralised automation. Its PC compatibility is based on DIMM CPU technology.

In addition to the standard Ethernet interface (10baseT), all standard field buses can be optionally integrated (CAN, Profibus, DeviceNet, InterBus Controlnet, ASI etc).

The plug type connectors for the field bus interface are two 9-pole sub D connectors. Via the diagnostics ports of the field bus interfaces are accessible through an additional 9-pole Sub-D interface (RS232).

The coupling of digital I/O signals with DIOCOM extension modules is achieved via the integrated Lutze bus (L-Bus).

A maximum of 12 DIOCOM modules can be coupled to one DIO PC. Furthermore, a remote I/O extension is possible through the optional field bus interface. In addition, data displays and HMIs are available to allow complete control solutions to be realised.