

- Installation Solutions
- Cabinet Solutions
- Automation Solutions

# Automation Components

Product Guide

# Reaching new heights in automation

## Installation Solutions



## Cabinet Solutions



## Automation Solutions



## OEM Solutions



## Transportation Solutions



We have been developing and manufacturing electronic and electrical engineering solutions for controls and installations for more than 50 years.

Our basic concept as system suppliers, providing a comprehensive and well-matched product range with which we can generate innovative and customized solutions for our customers, has stood the test of time.

The close relationship between product development and customer requirements allows Lutze continuously to improve and develop our products for the various markets.

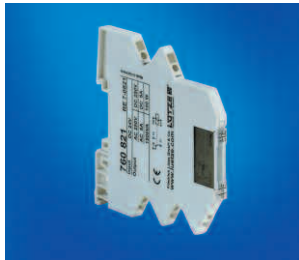
**Our solutions include components and concepts suitable for almost any control application. For more information on our solutions, please visit [www.lutze.com](http://www.lutze.com)**

### Contents:

• Relay modules	Page 3
• Signal converters and DIN rail interface	Page 4
• Industrial Power Supplies	Page 5
• Ethernet interconnection and EMC accessories	Page 6
• Networking cables and Fieldbus connectors	Page 7
• M8 and M12 sensor cables	Page 8
• M8 and M12 connectors	Page 9
• CABLEFIX-Vario and CABLEFIX panel entry	Page 10
• Cable glands and locknuts	Page 11

# Relay modules

Suitable for volt-free interfacing applications for PLCs and general control systems. Space saving (6.2 mm wide) single pole versions available. Standard and semiconductor switching versions included.



## Plug-In Microcompact

Description	Additional Information	Part No	Price
DC 24 V - 6 A/250 V SPCO	6.2 mm 'plug-in' relay	760821	£ 6.46
AC/DC 115 V - 6 A/250 V SPCO	6.2 mm 'plug-in' relay	760826	£ 9.99
AC/DC 240 V - 6 A/250 V SPCO	6.2 mm 'plug-in' relay	760827	£ 10.33
AC/DC 24 V - 3 A/DC 30 V	6.2 mm 'plug-in' SSR module	760311	£ 22.87
AC/DC 24 V - 0.75 A/AC 275 V	6.2 mm 'plug-in' SSR module	760691	£ 23.21
16-way jumper comb, blue	Suitable for 6.2 mm 'plug-in' relays	760804	£ 2.98
16-way jumper comb, red	Suitable for 6.2 mm 'plug-in' relays	762832	£ 2.98
16-way jumper comb, white	Suitable for 6.2 mm 'plug-in' relays	762833	£ 2.98



## Standard Microcompact

Description	Additional Information	Part No	Price
DC 24 V - 6 A/250 V SPCO	6.2 mm relay	762312	£ 10.48
AC/DC 24 V - 6 A/250 V SPCO	6.2 mm relay	762313	£ 9.21
AC/DC 115 V - 6 A/250 V SPCO	6.2 mm relay	762316	£ 11.51
AC/DC 240 V - 6 A/250 V SPCO	6.2 mm relay	762317	£ 12.77
16-way jumper comb, blue	Suitable for 6.2 mm standard relays	760804	£ 2.98
16-way jumper comb, red	Suitable for 6.2 mm standard relays	762832	£ 2.98
16-way jumper comb, white	Suitable for 6.2 mm standard relays	762833	£ 2.98



## Low Profile Microcompact

Description	Additional Information	Part No	Price
AC/DC 24 V - 6 A/250 V SPCO	6.2 mm relay	760022	£ 7.32
AC/DC 110 V - 6 A/250 V SPCO	6.2 mm relay	760028	£ 12.49
AC/DC 230 V - 6 A/250 V SPCO	6.2 mm relay	760027	£ 13.27
DC 24 V - 0.5 A/DC 48 V, 20 kHz	N/O transistor contact	762082	£ 26.77
DC 24 V - 1.7 A/DC 30 V, 2kHz	N/O transistor contact	760102	£ 10.69
DC 24 V - 5 A/DC 30 V, 2 kHz	N/O transistor contact	760103	£ 13.75
24-way jumper comb, blue	Suitable for 6.2 mm low profile relays	760801	£ 4.43



## Micro-Plug relays

Description	Additional Information	Part No	Price
DC 24 V - 8 A/250 V 2PCO	15.9 mm 'plug-in' relay c/w LED	770041	£ 4.70
AC 110 V - 8 A/250 V 2PCO	15.9 mm 'plug-in' relay c/w LED	770056	£ 6.46
AC 230 V - 8 A/250 V 2PCO	15.9 mm 'plug-in' relay c/w LED	770047	£ 7.17
DC 24 V - 6 A/250 V 4PCO	27.0 mm 'plug-in' relay c/w LED	770441	£ 7.28
AC 110 V - 6 A/250 V 4PCO	27.0 mm 'plug-in' relay c/w LED	770456	£ 7.75
AC 230 V - 6 A/250 V 4PCO	27.0 mm 'plug-in' relay c/w LED	770457	£ 7.87



All prices shown are Lutze UK List Prices and are subject to change. Please confirm at time of order. A full range of relay products (including solid state, low current, high speed switching, etc.) is available in the Lutze Catalogue - TK3.

Datasheets for these and other products can be downloaded from our web site. For more information please contact our sales office using the details on the back cover.

# Signal converters and DIN rail interface

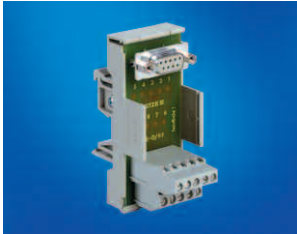
Industrial signal converters and isolators for analogue signals. Ultra-compact 6.2 mm wide DIN rail mounting housings.



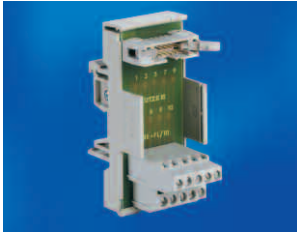
Description	Additional Information	Part No	Price
0-10 V/4-20 mA converter	DC 24 V, 3-way isolation	750532	£ 69.49
4-20 mA/0-10 V converter	DC 24 V, 3-way isolation	750536	£ 69.49
4-20 mA/4-20 mA isolator	DC 24 V, 3-way isolation	750538	£ 69.49
4-20 mA/4-20 mA isolator	Loop powered, 2-way isolation	750526	£ 39.04
0-10 V/0-20 mA/4-20 mA selectable input/output	DC 24 V, 3-way isolation	750539	£ 70.91
PT100 2wire 0-10 V/0-20 mA/4-20 mA selectable	DC 24 V, 3-way isolation, variable input -50-200°	750809	£ 86.04
TypeJ 0-10 V/0-20 mA/4-20 mA selectable	DC 24 V, 3-way isolation, variable input -50-600°	750839	£ 88.12
TypeK 0-10 V/0-20 mA/4-20 mA selectable	DC 24 V, 3-way isolation, variable input -50-600°	750869	£ 88.12
Reference voltage source, 10 V	DC 24 V, input, isolated 9-11V adjustable output	762084	£ 41.05
16-way jumper comb, blue	Suitable for 6.2 mm signal converters	760804	£ 2.98
16-way jumper comb, red	Suitable for 6.2 mm signal converters	762832	£ 2.98
16-way jumper comb, white	Suitable for 6.2 mm signal converters	762833	£ 2.98

## DIN rail connection modules

Interface modules for 'D' type (DIN41652) and flat cable (DIN41651) connector styles. Compact, low profile.



Description	Additional Information	Part no.	Price
9-way female D-type	35 x 78 x 58 mm (w x h x d)	711846	£ 24.81
15-way female D-type	45 x 78 x 58 mm (w x h x d)	711854	£ 27.30
25-way female D-type	70 x 78 x 58 mm (w x h x d)	711860	£ 32.37
37-way female D-type	100 x 78 x 58 mm (w x h x d)	711872	£ 39.08
9-way male D-type	35 x 78 x 58 mm (w x h x d)	711844	£ 24.81
15-way male D-type	45 x 78 x 58 mm (w x h x d)	711852	£ 27.30
25-way male D-type	70 x 78 x 58 mm (w x h x d)	711834	£ 32.37
37-way male D-type	100 x 78 x 58 mm (w x h x d)	711870	£ 39.08
20-way male flat cable type	55 x 78 x 58 mm (w x h x d)	711830	£ 31.83
40-way male flat cable type	110 x 78 x 58 mm (w x h x d)	711832	£ 54.62

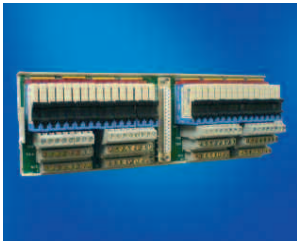


## DIN rail connection modules

Interface modules designed for simple connection to PLC input and output blocks. Compact, low profile.



Description	Additional Information	Part no.	Price
16-way 'sensor' input module	35 x 78 x 58 mm (w x h x d)	711757	£ 50.92
Suitable for direct connection to PLC input module via 20-way flat cable connector. Module provides simple 3-terminal connection to remote sensors. Extra terminals provided for supply connections.			



Description	Additional Information	Part no.	Price
32-way relay output module	248 x 78 x 58 mm (w x h x d)	711756	£ 220,20
Suitable for direct connection to PLC transistor output module via 37-way female D-type. Isolated changeover relay contacts and LED status indication are provided for each output. Extra screw terminals for supply connection.			

All prices shown are Lutze UK List Prices and are subject to change. Please confirm at time of order.

Cable assemblies for direct connection between most PLC systems and Lutze DIN connection modules are available, saving wiring time and production cost.

Customised cable assemblies can be created, even for small volumes, ensuring your system is up and running as quickly as possible.

For more information please contact our sales office using the details on the back cover.

# Industrial Power Supplies

DIN rail mounting industrial power supplies with highly stable voltage outputs. Compact, efficient designs include pfc on larger units (typically above 5A).



## 1ph (AC 90-264 V) low profile

Description	Additional Information	Part No	Price
1.2 A 24 V 30 W low profile case, screw terminals	71.0 x 90.0 x 62.0 mm (w x h x d)	722787	£38.01
2.2 A 24 V 50 W low profile case, screw terminals	71.0 x 90.0 x 62.0 mm (w x h x d)	722788	£46.15
3.0 A 24 V 70 W low profile case, screw terminals	71.0 x 90.0 x 62.0 mm (w x h x d)	722789	£48.85



## 1ph (AC 90-265 V) standard

Description	Additional Information	Part No	Price
3 A 5 V 15 W plastic case, screw terminals	22.5 x 90 x 115 mm (w x h x d)	722762	£ 33.15
6 A 5 V 30 W plastic case, screw terminals	40.5 x 90 x 115 mm (w x h x d)	722763	£ 36.14
2.5 A 12 V 30 W plastic case, screw terminals	40.5 x 90 x 115 mm (w x h x d)	722768	£ 36.14
5 A 12 V 60 W plastic case, screw terminals	40.5 x 90 x 115 mm (w x h x d)	722769	£ 41.67
1.25 A 24 V 30 W plastic case, screw terminals	40.5 x 90 x 115 mm (w x h x d)	722753	£ 36.14
2.5 A 24 V 60 W plastic case, screw terminals	40.5 x 90 x 115 mm (w x h x d)	722754	£ 41.67
5 A 24 V 120 W metal case, screw terminals	63.2 x 123 x 116 mm (w x h x d)	722758	£ 64.81
10 A 24 V 240 W metal case, screw terminals	83 x 125 x 116 mm (w x h x d)	722759	£ 103.68
20 A 24 V 480 W metal case, screw terminals	175 x 125 x 110.7 mm (w x h x d)	722782	£ 151.71
5 A 48 V 240 W metal case, screw terminals	83 x 125 x 116 mm (w x h x d)	722778	£ 103.68
10 A 48 V 480 W metal case, screw terminals	175 x 125 x 110.7 mm (w x h x d)	722779	£ 151.71



## 1ph (90-264 V) slim case with Power Boost

Description	Additional Information	Part No	Price
5A 24V 120W slim case, screw terminals	40 x 115 x 128 mm (w x h x d)	722783	£ 81.71
2.5A 48V 120W slim case, screw terminals	40 x 115 x 128 mm (w x h x d)	722784	£ 96.90
10A 24V 240W slim case, screw terminals	63.5 x 140 x 139 mm (w x h x d)	722785	£ 119.20
20A 24V 480W slim case, screw terminals	81 x 127 x 146 mm (w x h x d)	722986	£ 175.60
5A 48V 240W slim case, screw terminals	63.5 x 140 x 139 mm (w x h x d)	722786	£ 126.75



## 1 or 2ph (187-550 V) slim case with Power Boost

Description	Additional Information	Part No	Price
5A 24V 120W slim case, screw terminals	55.0 x 115.0 x 130.0 mm (w x h x d)	722983	£ 114.00
10A 24V 240W slim case, screw terminals	73.0 x 140.0 x 137.0 mm (w x h x d)	722984	£ 122.14



## 3ph (340-575 V) standard

Description	Additional Information	Part No	Price
10 A 24 V 240 W standard case, screw terminals	89 x 123 x 111.3 mm (w x h x d)	722804	£ 120.45
20 A 24 V 480 W standard case, screw terminals	150 x 123 x 111.3 mm (w x h x d)	722805	£ 170.76
40 A 24 V 960 W standard case, screw terminals	276 x 125 x 111.3 mm (w x h x d)	722806	£ 300.95
10 A 48 V 480 W standard case, screw terminals	150 x 123 x 111.3 mm (w x h x d)	722809	£ 170.76
20 A 48 V 960 W standard case, screw terminals	276 x 125 x 111.3 mm (w x h x d)	722810	£ 300.95



## 3ph (340-550V) slim case with Power Boost

Description	Additional Information	Part No	Price
10 A 24 V 240 W slim case, screw terminals	90 x 130 x 104.5 mm (w x h x d)	722799	£ 149.29
20 A 24 V 480 W slim case, screw terminals	81 x 127 x 146 mm (w x h x d)	722800	£ 203.57
30 A 24 V 720 W slim case, screw terminals	81 x 127 x 146 mm (w x h x d)	722802	£ 273.88
40 A 24 V 960 W slim case, screw terminals	81 x 127 x 146 mm (w x h x d)	722811	£ 321.70
20 A 48 V 960 W slim case, screw terminals	81 x 127 x 146 mm (w x h x d)	722812	£ 372.04

**Interface Technology - Current Protection System** DIN rail mounting current monitoring and protection modules for 12 / 24Vdc systems. Adjustable current setting (1A to 10A), adjustable switching characteristics (slow, medium, fast)



## Current protection modules

Description	Additional Information	Part No	Price
Standard protection module, 1-10 A, DC 10-32 V	8.1 x 114.5 x 110.0 mm (w x h x d)	716400	£ 31.86
Single channel device, use busbar and terminal set (below) if used in groups			
Protection module with comms, 1-10 A, DC 10-32 V. Single channel device, use busbar and terminal set (below) if used in groups Gateway module (below) required for control and monitoring from networked systems	8.1 x 114.5 x 110.0 mm (w x h x d)	716410	£ 39.72



## Module accessories

Terminal set to enable group connection	Use with busbar (below)	716425	£ 10.56
40A copper busbar, 1m length	Suitable for supply of load current	716426	£ 13.74
Insulating cover for busbar, 1m length		716427	£ 1.46
6A 8-way jumper comb (white) for 0v etc. terminals	Not suitable for load current input	716428	£ 2.31
Fieldbus gateway module, use with 716410 only	USB, CANopen, RS232	716459	£ 326.40

All prices shown are Lutze UK List Prices and are subject to change. Please confirm at time of order

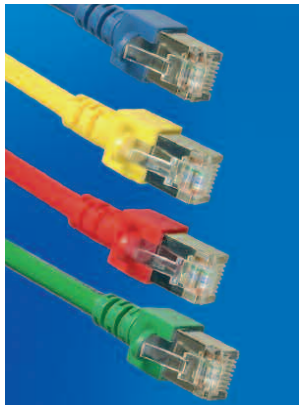
# Ethernet interconnection and EMC accessories

Fully shielded interconnection products for noisy industrial environments. Patch cables and components are suitable for most ethernet based systems including EtherNet/IP, ProfiNet, ModbusTCP, PowerLink etc.



## Unmanaged switches

Description	Additional Information	Part No	Price
5-port ethernet switch 100Tx	DIN rail mount, 12-48V DC supply	772000	£ 72.52
5-port ethernet switch 1000Tx	DIN rail mount, 12-48V DC supply	772010	£ 143.72
8-port ethernet switch 100Tx	DIN rail mount, 12-48V DC supply	772002	£ 100.25
8-port ethernet switch 1000Tx	DIN rail mount, 12-48V DC supply	771012	£ 213.33



## Shielded patch cables

Description	Additional Information	Part No	Price
Cat5e STP Patch Cable 1:1, grey, 0.5 m	PVC shielded twisted pair cable	192000.0050	£ 1.17
Cat5e STP Patch Cable 1:1, grey, 1 m	PVC shielded twisted pair cable	192000.0100	£ 1.56
Cat5e STP Patch Cable 1:1, grey, 1.5 m	PVC shielded twisted pair cable	192000.0150	£ 1.95
Cat5e STP Patch Cable 1:1, grey, 2 m	PVC shielded twisted pair cable	192000.0200	£ 2.44
Cat5e STP Patch Cable 1:1, grey, 3 m	PVC shielded twisted pair cable	192000.0300	£ 3.20
Cat5e STP Patch Cable 1:1, grey, 5 m	PVC shielded twisted pair cable	192000.0500	£ 4.89
Cat5e STP Patch Cable 1:1, grey, 10 m	PVC shielded twisted pair cable	192000.1000	£ 8.22
Cat6 STP Patch Cable 1:1, grey, 0.5 m	PVC shielded twisted pair cable	192100.0050	£ 3.71
Cat6 STP Patch Cable 1:1, grey, 1 m	PVC shielded twisted pair cable	192100.0100	£ 4.69
Cat6 STP Patch Cable 1:1, grey, 1.5 m	PVC shielded twisted pair cable	192100.0150	£ 5.63
Cat6 STP Patch Cable 1:1, grey, 2 m	PVC shielded twisted pair cable	192100.0200	£ 6.73
Cat6 STP Patch Cable 1:1, grey, 3 m	PVC shielded twisted pair cable	192100.0300	£ 6.98
Cat6 STP Patch Cable 1:1, grey, 5 m	PVC shielded twisted pair cable	192100.0500	£ 11.16
Cat6 STP Patch Cable 1:1, grey, 10 m	PVC shielded twisted pair cable	192100.1000	£ 17.69



## RJ45 connections

Description	Additional Information	Part No	Price
Cat5e RJ45 8/8 F/F panel entry point	22.5mm shielded RJ45 panel entry	492075	£ 7.71
Cat6 RJ45 8/8 F/F panel entry point	22.5mm shielded RJ45 panel entry	491075	£ 25.22
Cat5e Ethernet 8-way IDC RJ45 connector	IP20 field wireable for AWG22 cable	772100	£ 12.47
Cat5e Profinet 4-way IDC RJ45 connector	IP20 field wireable for AWG22 cable	772101	£ 11.22
Cat6 RJ45 8-way DIN cable connection	DIN rail mount, converts cable to RJ45	772104	£ 24.08
M12-RJ45 4/4 Cat5e cabinet entry, 90°	M12 female D-code 4-pole to RJ45	490105	£ 21.13
M12-RJ45 4/4 Cat5e cabinet entry, 180°	M12 female D-code 4-pole to RJ45	490106	£ 21.13
M12-RJ45 8/8 Cat6 cabinet entry, 90°	M12 female A-code 8-pole to RJ45	490107	£ 27.14
M12-RJ45 8/8 Cat6 cabinet entry, 180°	M12 female A-code 8-pole to RJ45	490108	£ 27.14

Customised industrial ethernet patch leads and cable assemblies, including Superflex type, are available in small volumes. Standard patch cables are also available in other lengths and a range of colours to help identify specific cable functions. For more information please contact our sales office using the details on the back cover.

## Cable Solutions - EMC screening products

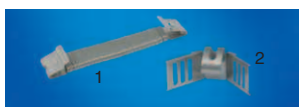
EMC screening rails and accessories enabling easy connection of cable screens to a ground system.



EMC rails	Additional Information	Part no.	Price
9-slot EMC rail, with mounting brackets	146 x 32 x 15 mm (w x h x d)	346855	£ 14.50
20-slot EMC rail, with mounting brackets	261 x 32 x 15 mm (w x h x d)	346831	£ 32.25
52-slot EMC rail, with mounting brackets	597 x 32 x 15 mm (w x h x d)	346832	£ 56.20
110-slot EMC rail, suitable for cutting to length	1155 x 32 x 15 mm (w x h x d)	346813	£ 8.00



Accessories	Additional Information	Part no.	Price
DIN rail mounting 2-slot clip for single cables	Provides connection to a grounded DIN rail	330088	£ 0.62
EMC shield clamp for single cables, 0-12 mm dia.	Requires 2 slots on EMC rail (2)	330089	£ 0.25
EMC spring clamp for single cables, 12-20 mm dia.	Requires 2-3 slots on EMC rail (1)	330071	£ 1.89
EMC spring clamp for single cables, 20-30 mm dia.	Requires 3-4 slots on EMC rail (1)	330072	£ 2.08
EMC spring clamp for single cables, 30-50 mm dia.	Requires 4-5 slots on EMC rail (1)	330073	£ 2.38



All prices shown are Lutze UK List Prices and are subject to change. Please confirm at time of order

# Networking cables and Fieldbus connectors

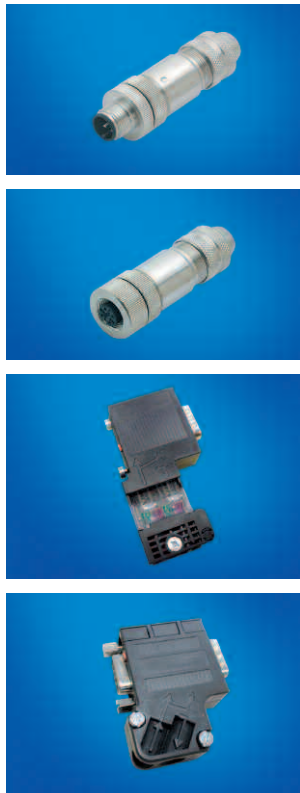
Fully shielded interconnection products for noisy industrial environments. Patch cables and components are suitable for most ethernet based systems including EtherNet/IP, ProfiNet, ModbusTCP, PowerLink etc.



Description	Additional Information	Part No	Price/m
CC-Link PVC cable UL/CLPA appr	CC-L BUS (ST) CY (3x0.5) cUL	104300S	£ 2.20
ASi yellow standard rubber cable	ASi BUS 2 x 1.5 x 100 m Yellow Rubber	104219	£ 1.75
ASi black standard rubber cable	ASi BUS 2 x 1.5 x 100 m Black Rubber	104218	£ 1.75
ASi yellow extra tough TPE cable	ASi BUS 2 x 1.5 x 100 m Yellow TPE	104216	£ 1.75
ASi black extra tough TPE cable	ASi BUS 2 x 1.5 x 100 m Black TPE	104217	£ 1.75
Profibus 'FastConnect' PVC UL appr.	EL BUS (C) Y FC UL (1x2x0.64/AWG22)	104293	£ 1.26
Profibus PVC stranded cores	EL BUS (C) Y (1x2x0.64)	104214	£ 1.34
Profibus PUR 'SuperFlex'	SU BUS (C) PUR (1x2x0.64))	104215	£ 2.42
DeviceNet PUR Superflex 'Drop' cable	SU BUS (C) PUR ((2x0.22)+(2x0.34))	104289	£ 2.46
DeviceNet PUR Superflex 'Trunk' cable	SU BUS (C) PUR ((2x0.75)+(2x1.5))	104279	£ 6.58
Ethernet PUR Cat5e	EL BUS (C) PUR(4x2xAWG26/7) StC	104327	£ 2.92
Ethernet PVC Cat5e	EL BUS (C) PVC(4x2xAWG24/7) StC	104336	£ 3.98
Ethernet PVC Cat5e 'SuperFlex'	SU BUS (C) PUR (4x2xAWG24/19) StC	104337	£ 6.42
Profinet PVC Cat5	EL BUS (C) PVC (2x2xAWG22/7) StC	104307	£ 2.24
Profinet PUR Cat5 'SuperFlex'	SU BUS (C) PUR (2x2xAWG22/7) StC	104303	£ 3.48

## Fieldbus connectors

Fieldbus connectors suitable for on-site wiring to appropriate cable



Accessories	Additional Information	Part no.	Price
Shielded M12 4-pole male straight connector	A-code	490050	£ 18.26
Shielded M12 5-pole male straight connector	A-code, suitable for CAN/Device-Net	490051	£ 20.08
Shielded M12 8-pole male straight connector	A-code, can be used for 4-pair Ethernet	490054	£ 16.09
Shielded M12 4-pole female straight connector	A-code	490052	£ 18.16
Shielded M12 5-pole female straight connector	A-code, suitable for CAN/Device-Net	490053	£ 21.65
Shielded M12 8-pole female straight connector	A-code, can be used for 4-pair Ethernet	490077	£ 18.14
Shielded M12 5-pole male straight connector	B-code, suitable for ProfiBus/InterBus	490072	£ 18.14
Shielded M12 5-pole female straight connector	B-code, suitable for ProfiBus/InterBus	490073	£ 13.23
Shielded M12 4-pole male straight connector	D-code, suitable for 2-pair Ethernet/Profinet	490074	£ 8.30
M12 4-pole male terminator for ProfiBus	B-code, ProfiBus systems only	748077	£ 9.30
M12 5-pole male terminator for CAN/DeviceNet	A-code, CAN/DeviceNet systems only	748078	£ 25.00
90° Profibus connector, no PG port	Screw terminals, suitable for any cable	770601	£ 35.00
90° Profibus connector, with PG port	Screw terminals, suitable for any cable	770602	£ 28.00
90° Profibus connector, no PG port	FC terminals, suitable for FC cable only	770605	£ 38.00
90° Profibus connector, with PG port	FC terminals, suitable for FC cable only	770606	£ 25.00
35° Profibus connector, no PG port	Screw terminals, suitable for any cable	770603	£ 35.00
35° Profibus connector, with PG port	Screw terminals, suitable for any cable	770604	£ 32.00
180° Profibus connector	FC terminals, suitable for FC cable only	770600	

All prices shown are Lutze UK List Prices and are subject to change. Cable pricing is subject to copper surcharge variations. Please confirm at time of order

# M8 and M12 sensor cables

A full range of interconnection options for sensors and control systems.  
Tough, oil resistant, PUR cables for flexing applications.



## M8 to open end cables

Description	Additional Information	Part no.	Price
M8 ST female 3pole PUR 2m	Right angle IP67 connector to open end	481020	£ 5.96
M8 ST female 3pole PUR 5m	Right angle IP67 connector to open end	481050	£ 6.62
M8 ST female 4pole PUR 2m	Straight IP67 connector to open end	415020	£ 6.43
M8 ST female 4pole PUR 5m	Straight IP67 connector to open end	415050	£ 7.16
M8 R/A female 3pole 2m PUR	Right angle IP67 connector to open end	474020	£ 5.38
M8 R/A female 3pole 5m PUR	Right angle IP67 connector to open end	474050	£ 6.88
M8 R/A female 4pole 2m PUR	Right angle IP67 connector to open end	416020	£ 7.76
M8 R/A female 4pole 5m PUR	Right angle IP67 connector to open end	416050	£ 8.65
M8 ST male 3pole PUR 2m	Straight IP67 connector to open end	486020	£ 5.17
M8 ST male 3pole PUR 5m	Straight IP67 connector to open end	486050	£ 8.12
M8 ST male 4pole PUR 2m	Straight IP67 connector to open end	447020	£ 6.70
M8 ST male 4pole PUR 5m	Straight IP67 connector to open end	447050	£ 9.11



## M12 to open end cables

Description	Additional Information	Part no.	Price
M12 ST female 3pole 2m PUR	Straight IP67 connector to open end	465020	£ 6.56
M12 ST female 3pole 5m PUR	Straight IP67 connector to open end	465050	£ 7.50
M12 ST female 3pole 10m PUR	Straight IP67 connector to open end	465100	£ 10.91
M12 ST female 4pole 2m PUR	Straight IP67 connector to open end	466020	£ 6.62
M12 ST female 4pole 5m PUR	Straight IP67 connector to open end	466050	£ 7.74
M12 ST female 4pole 10m PUR	Straight IP67 connector to open end	466100	£ 10.72
M12 ST female 5pole 5m PUR	Straight IP67 connector to open end	477050	£ 10.49
M12 ST female 8pole 5m PUR	Straight IP67 connector to open end	478050	£ 19.38
M12 R/A female 4pole 2m PUR	Right angle IP67 connector to open end	464020	£ 6.80
M12 R/A female 4pole 5m PUR	Right angle IP67 connector to open end	464050	£ 7.91
M12 ST male 3pole 2m PUR	Straight IP67 connector to open end	471020	£ 5.86
M12 ST male 3pole 5m PUR	Straight IP67 connector to open end	471050	£ 7.37
M12 ST male 3pole 10m PUR	Straight IP67 connector to open end	471100	£ 11.84
M12 ST male 4pole 2m PUR	Straight IP67 connector to open end	472020	£ 5.78
M12 ST male 4pole 5m PUR	Straight IP67 connector to open end	472050	£ 7.54
M12 ST male 4pole 10m PUR	Straight IP67 connector to open end	472100	£ 11.68
M12 ST male 5pole 5m PUR	Straight IP67 connector to open end	473050	£ 8.61
M12 ST male 8pole 5m PUR	Straight IP67 connector to open end	482050	£ 17.38



## M8 to M8 jumper cables

Description	Additional Information	Part no.	Price
M8 ST female - M8 ST male 3pole 1.0m PUR	Straight IP67 to straight IP67 connector	487010	£ 8.70
M8 ST female - M8 ST male 3pole 1.5m PUR	Straight IP67 to straight IP67 connector	487015	£ 9.17
M8 ST female - M8 ST male 3pole 2.0m PUR	Straight IP67 to straight IP67 connector	487020	£ 10.68
M8 RA female - M8 ST male 3pole 0.6m PUR	Right angle IP67 to straight IP67 connector	488006	£ 9.69
M8 RA female - M8 ST male 3pole 1.0m PUR	Right angle IP67 to straight IP67 connector	488010	£ 9.83
M8 RA female - M8 ST male 3pole 1.5m PUR	Right angle IP67 to straight IP67 connector	488015	£ 10.06
M8 RA female - M8 ST male 3pole 2.0m PUR	Right angle IP67 to straight IP67 connector	488020	£ 10.43



## M8 to M12 jumper cables

Description	Additional Information	Part no.	Price
M8 ST female - M12 ST male 3pole 0.6m PUR	Straight IP67 to straight IP67 connector	422006	£ 10.15
M8 ST female - M12 ST male 3pole 1.0m PUR	Straight IP67 to straight IP67 connector	422010	£ 10.32
M8 ST female - M12 ST male 3pole 1.5m PUR	Straight IP67 to straight IP67 connector	422015	£ 11.22
M8 ST female - M12 ST male 3pole 2.0m PUR	Straight IP67 to straight IP67 connector	422020	£ 11.98



## M12 to M12 jumper cables

Description	Additional Information	Part no.	Price
M12 ST female to M12 ST male 3pole, 0.6m	Straight IP67 to straight IP67 connector	428006	£ 9.59
M12 ST female to M12 ST male 3pole, 1.0m	Straight IP67 to straight IP67 connector	428010	£ 10.70
M12 ST female to M12 ST male 3pole, 2.0m	Straight IP67 to straight IP67 connector	428020	£ 11.52
M12 ST female to M12 ST male 4pole, 0.6m	Straight IP67 to straight IP67 connector	429006	£ 10.74
M12 ST female to M12 ST male 4pole, 1.0m	Straight IP67 to straight IP67 connector	429010	£ 11.10
M12 ST female to M12 ST male 4pole, 2.0m	Straight IP67 to straight IP67 connector	429020	£ 12.03



# M8 and M12 connectors

A full range of interconnection options for sensors and control systems.  
IP67 protection class on all rewirable connectors.



## M8 Connectors

Description	Additional Information	Part no.	Price
M8 ST female 3pole rewirable connector	Screw terminals, IP67 protection	490037	£ 7.62
M8 ST female 4pole rewirable connector	Screw terminals, IP67 protection	490059	£ 8.78
M8 ST male 3pole rewirable connector	Screw terminals, IP67 protection	490035	£ 7.62
M8 ST male 4pole rewirable connector	Screw terminals, IP67 protection	490057	£ 8.78
M8 ST female 3pole IDC connector IDC	IDC terminals, IP67 protection	490096	£ 8.99
M8 ST female 4pole IDC connector IDC	IDC terminals, IP67 protection	490097	£ 9.68
M8 ST male 3pole IDC connector IDC	IDC terminals, IP67 protection	490055	£ 7.62
M8 ST male 4pole IDC connector IDC	IDC terminals, IP67 protection	490093	£ 9.68
M8 female 3pole panel connector	M8 panel thread, 3x0.5m tails	490060	£ 7.45
M8 female 4pole panel connector	M8 panel thread, 4x0.5m tails	490061	£ 7.74
M8 male 3pole panel connector	M8 panel thread, 3x0.5m tails	490062	£ 6.34
M8 male 4pole panel connector	M8 panel thread, 4x0.5m tails	490063	£ 8.14
M8/M12 'T' connector, 3pole	2xM8 female to 1xM12 male	490038	£ 12.14
M8 protective cover for female connectors	Black PVC	499989	£ 0.30

## M12 Connectors

Description	Additional Information	Part no.	Price
M12 ST female 4pole rewirable connector	Screw terminals, IP67 protection	490011	£ 5.88
M12 ST female 5pole rewirable connector	Screw terminals, IP67 protection	490012	£ 6.24
M12 ST female 8pole rewirable connector	Screw terminals, IP67 protection	490071	£ 18.46
M12 ST male 4pole rewirable connector	Screw terminals, IP67 protection	490017	£ 6.30
M12 ST male 5pole rewirable connector	Screw terminals, IP67 protection	490018	£ 6.90
M12 ST male 8pole rewirable connector	Screw terminals, IP67 protection	490070	£ 17.71
M12 ST 4pole IDC female rewirable connector	IDC terminals, IP67 protection	490029	£ 5.38
M12 ST 4pole IDC male rewirable connector	IDC terminals, IP67 protection	490028	£ 5.38
M12 ST male 4pole DUO rewirable connector	Dual cable entry, IP67 protection	490047	£ 15.87
M12 ST male 5pole DUO rewirable connector	Dual cable entry, IP67 protection	490048	£ 23.20
M12 'T' connector, 5 pole	2xM12 female to 1xM12 male	490026	£ 12.48
M12 female 4pole panel connector	M16 panel thread, 4x0.5m tails	490064	£ 6.88
M12 female 5pole panel connector	M16 panel thread, 5x0.5m tails	490065	£ 7.35
M12 female 8pole panel connector	M16 panel thread, 8x0.5m tails	490066	£ 13.23
M12 male 4pole panel connector	M16 panel thread, 4x0.5m tails	490067	£ 6.88
M12 male 5pole panel connector	M16 panel thread, 5x0.5m tails	490068	£ 7.35
M12 male 8pole panel connector	M16 panel thread, 8x0.5m tails	490069	£ 11.10
M12 protective cover for female connectors	Black PVC	499994	£ 0.28

All prices shown are Lutze UK List Prices and are subject to change. Please confirm at time of order.

More M8 and M12 interconnection products, including shielded cables and connectors, fieldbus interconnection, A, B, D coded connectors and cables, are available in the main Lutze Catalogue TK1, available on request.

Datasheets for all Lutze standard products can be downloaded from our web site.

For more information please contact our sales office using the details on the back cover.

# CABLEFIX-Vario and CABLEFIX panel entry

## CABLEFIX Vario

Cost effective panel entry system for assembled cables with connectors at both ends. High density design requires minimum space. Plastic (PA66 with brass reinforcing) or barrel finished aluminium frames provide tough, easy fit, mounting to control panel. Rubber (TPE) sealing modules provide IP65 protection and strain relief on cable entry.

**Product is easily specified by following the steps below.**

1. Count how many cables you have against each clamp range diameter for the rubber sealing modules below.
2. Check the number of holes in each module and calculate how many of each type are needed for each cable diameter.
3. Add up the number of modules (note, some modules are only 1/2 size) and work out which size clamping frame is needed.
4. Use blank modules (1/2 or full size) to fill up any spare space. Use blank plugs to match module type to fill up any spare holes. Modules can be used in any combination, up to the maximum for each frame. 2x 1/2 size modules are equivalent to 1x full module.



### Rubber clamping modules and blanking plugs

Description	Rubber Modules		Blanking plugs	
	Part No	Price	Part No	Price
Blank module, no holes, 1/2 size	606150	£ 3.29	606250	£ 0.47
14 holes, clamp range 4 - 4.5mm, 1/2 size	606151	£ 3.29	606251	£ 0.47
8 holes, clamp range 4.5 - 5.5mm, 1/2 size	606152	£ 3.29	606252	£ 0.47
8 holes, clamp range 5.5 - 6.5mm, 1/2 size	606153	£ 3.29	606253	£ 0.47
5 holes, clamp range 6.5 - 7.5mm, 1/2 size	606154	£ 3.29	606254	£ 0.71
5 holes, clamp range 7.5 - 8.5mm, 1/2 size	606155	£ 3.29	606255	£ 0.71
3 holes, clamp range 8.5 - 9.5mm, 1/2 size	606156	£ 3.29	606256	£ 0.71
3 holes, clamp range 9.5 - 10.5mm, 1/2 size	606157	£ 3.29	606257	£ 0.71
2 holes, clamp range 10.5 - 12.5mm, 1/2 size	606158	£ 3.29	606258	£ 1.06
2 holes, clamp range 12.5 - 14.5mm, 1/2 size	606159	£ 3.29	606259	£ 1.06
2 holes, clamp range 14.5 - 16.5mm, 1/2 size	606160	£ 3.29	-	
Blank module, no holes, full size	606200	£ 4.46	606260	£ 1.06
2 holes, clamp range 16.5 - 18.5mm, full size	606201	£ 4.46	-	
1 hole, clamp range 18.5 - 20.5mm, full size	606202	£ 4.46	-	
1 hole, clamp range 20.5 - 22.5mm, full size	606203	£ 4.46	-	
1 hole, clamp range 22.5 - 24.5mm, full size	606204	£ 4.46	-	
1 hole, clamp range 24.5 - 26.5mm, full size	606205	£ 4.46	-	
1 hole, clamp range 26.5 - 28.5mm, full size	606206	£ 4.46	-	
1 hole, clamp range 28.5 - 30.5mm, full size	606207	£ 4.46	-	
1 hole, clamp range 30.5 - 32.5mm, full size	606208	£ 4.46	-	
1 hole, clamp range 32.5 - 34.5mm, full size	606209	£ 4.46	-	



### Mounting frames

PA66 plastic (brass reinforced) type	Dimensions (l x h x d)	Part No	Price
Accepts 2x full modules or equivalent	136 x 71 x 30	606050	£ 28.18
Accepts 3x full modules or equivalent	164 x 71 x 30	606051	£ 32.76
Barrel finished aluminium type			
Accepts 2x full modules or equivalent	108 x 68 x 30	606001	£ 73.84
Accepts 3x full modules or equivalent	148 x 68 x 30	606002	£ 78.46
Accepts 3x full + 3x 1/2 modules or equivalent	148 x 88 x 30	606003	£ 81.94
Accepts 6x full modules or equivalent	148 x 108 x 30	606004	£ 84.48
Accepts 4x full modules or equivalent	188 x 78 x 30	606005	£ 86.74
Accepts 4x full + 4x 1/2 modules or equivalent	188 x 98 x 30	606006	£ 91.31
Accepts 8x full modules or equivalent	188 x 118 x 30	606007	£ 93.60
Accepts 3x full modules or equivalent	148 x 68 x 30	606040	£ 69.87

## CABLEFIX

High efficiency and high density panel entry system for small to medium cables, air lines etc.

Provides ultra compact alternative to cable glands. Built in sealing (to IP55) using TPE rubber sealing gasket. Integrated 'single operation' strain relief. Can be used singly, or in multiples. Simple clip together system allows units to be assembled in any order.



### CABLEFIX COMPACT

Description	Additional Information	Part no.	Price
8 cable entries, 3.8 - 6.3 mm	50 x 50 x 10 (w x h x d)	600321	£ 4.13
4 cable entries, 2x 6.1 - 8.8 and 2x7.8 - 10.7 mm	50 x 50 x 10 (w x h x d)	600320	£ 4.13
6 cable entries, 6.3 - 8.9 mm	50 x 50 x 10 (w x h x d)	600347	£ 4.13

All prices shown are Lutze UK List Prices and are subject to change. Please confirm at time of order  
 PG sizes for all cable glands are available. Lutze also offers a comprehensive range of UL flexible conduits.  
 For more information please contact our sales office using the details on the back cover.

# Cable glands and locknuts

Nickel plated brass and tough plastic cable glands for standard and EMC applications. Special insert designed to terminate screened cables on EMC versions. EMC locknuts available to ensure proper screen connection. IP68 sealing standard on all ranges.



## EMC metal glands and locknuts

Description	Additional Information	Part no.	Price
M12 EMC cable gland	For screened cables 3.0-6.5mm	600170	£ 2.78
M16 EMC cable gland	For screened cables 5.5-10mm	600171	£ 3.12
M16 EMC cable gland	For screened cables 5.5-10mm	600172	£ 3.56
M20 EMC cable gland	For screened cables 11-18mm	600173	£ 6.27
M25 EMC cable gland	For screened cables 11-18mm	600174	£ 9.76
M32 EMC cable gland	For screened cables 15-21mm	600460	£ 0.37
M12 EMC locknut	Use with 600170	600461	£ 0.49
M16 EMC locknut	Use with 600173	600462	£ 0.53
M20 EMC locknut	Use with 600173	600463	£ 0.82
M25 EMC locknut	Use with 600174	600464	£ 1.22



## Metal glands and locknuts

Description	Additional Information	Part no.	Price
M12 brass cable gland	For cables diameter 3-6.5mm	600701	£ 1.71
M16 brass cable gland	For cables diameter 5.5-10mm	600760	£ 1.81
M20 brass cable gland	For cables diameter 8-13mm	600761	£ 2.37
M25 brass cable gland	For cables diameter 11-18mm	600762	£ 4.06
M32 brass cable gland	For cables diameter 15-21mm	600763	£ 7.61
M12 brass locknut	Use with 600701	600368	£ 0.11
M16 brass locknut	Use with 600760	600361	£ 0.18
M20 brass locknut	Use with 600761	600362	£ 0.27
M25 brass locknut	Use with 600762	600363	£ 0.41
M32 brass locknut	Use with 600763	600364	£ 0.49



## Metal glands and locknuts

Description	Additional Information	Part no.	Price
M12 grey plastic cable gland	For cables diameter 2-6.5mm	600790	£ 0.30
M16 grey plastic cable gland	For cables diameter 4-10mm	600680	£ 0.33
M20 grey plastic cable gland	For cables diameter 6-12mm	600681	£ 0.39
M25 grey plastic cable gland	For cables diameter 9-16mm	600682	£ 0.49
M32 grey plastic cable gland	For cables diameter 10-21mm	600683	£ 1.06
M12 grey plastic locknut	Use with 600790	600398	£ 0.05
M16 grey plastic locknut	Use with 600680	600391	£ 0.06
M20 grey plastic locknut	Use with 600681	600392	£ 0.06
M25 grey plastic locknut	Use with 600682	600393	£ 0.07
M32 grey plastic locknut	Use with 600683	600394	£ 0.14



## Metal glands and locknuts

Description	Additional Information	Part no.	Price
M12 black plastic cable gland	For cables diameter 2-6.5 mm	600840	£ 0.30
M16 black plastic cable gland	For cables diameter 4-10 mm	600841	£ 0.33
M20 black plastic cable gland	For cables diameter 6-12 mm	600842	£ 0.39
M25 black plastic cable gland	For cables diameter 9-16 mm	600843	£ 0.49
M32 black plastic cable gland	For cables diameter 10-21 mm	600844	£ 1.06
M12 black plastic locknut	Use with 600840	600850	£ 0.05
M16 black plastic locknut	Use with 600841	600851	£ 0.06
M20 black plastic locknut	Use with 600842	600852	£ 0.06
M25 black plastic locknut	Use with 600843	600853	£ 0.07
M32 black plastic locknut	Use with 600844	600854	£ 0.14

All prices shown are Lutze UK List Prices and are subject to change. Please confirm at time of order

PG sizes for all cable glands are available. Lutze also offers a comprehensive range of UL flexible conduits. For more information please contact our sales office using the details on the back cover.

**Available from**

**LC Automation Ltd**

Duttons Way,  
Shadsworth Business Park  
Blackburn, BB1 2QR  
Tel.: 01254 685900  
Fax: 01254 685901  
sales@lca.co.uk  
www.lcautomation.co.uk



**Cables and Cords**

**Cable Assembly**

**C-Tracks**

**Cable fittings**

**Cable conduits**

**LSC-Wiring-System**

**Module- and Interface  
Technology**

**Suppression Technology  
Power Supplies**

**Railway-Technology**

**Germany**

Friedrich Lütze GmbH & Co. KG  
info@luetze.de

**Austria**

LÜTZE Elektrotechnische  
Erzeugnisse Ges.m.b.H.  
office@luetze.at

**Switzerland**

LÜTZE AG  
info@luetze.ch

**USA**

LUTZE INC.  
info@lutze.com

**United Kingdom**

LUTZE Ltd.  
sales.gb@lutze.co.uk

**France**

LUTZE SAS  
lutze@lutze.fr

**Spain**

LUTZE, S.L.  
info@lutze.es

**China**

Luetze Trading (Shanghai) Co.Ltd.  
info@luetze.cn

[www.lcautomation.com](http://www.lcautomation.com)

**LUTZE**   
Systematic Technology