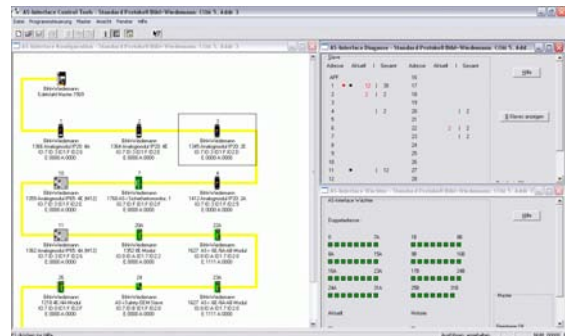


Software for Configuration and Programming and

for AS-i Diagnostics and AS-i Safety Diagnostics

of Bihl+Wiedemann AS-i Masters and AS-i Gateways

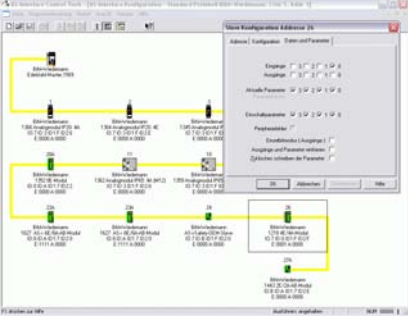



Article no. BW1602: Software AS-i Control Tools with serial cable for AS-i Master in Stainless Steel

Article no. BW1563: Software AS-i Control Tools with serial cable for Allen-Bradley AS-i Master

Article no. BW1203: Software AS-i Control Tools

Article no. BW2071: ASIMON and AS-i Control Tools with serial cable for AS-i Master/Monitor in Stainless Steel

<p>General information</p>	<ul style="list-style-type: none"> operating system: Win 98 SE, Win Me, Win 2000, Win XP and Win NT4, Vista 32-bit comprehensible operator guidance simple installation language: English/German extensive help menu
<p>AS-i configuration editor</p> 	<p>opening, saving, editing and managing of AS-i configurations tool for the commissioning of AS-i</p> <ul style="list-style-type: none"> graphical display of the AS-i network alternative plain text display of the AS-i network -many devices icons out of an icon archive -simple embedding of own icons and devices display of the actual configuration on the AS-i (slave-profiles in plain language) comparison of actual configuration with the projected one programming of slave addresses projecting of the actual configuration reading of inputs writing of outputs writing of parameters projecting of individual slaves (Offline/Online) slave can be given its own name
<p>AS-i address assistant</p>	<ul style="list-style-type: none"> automatic address of the AS-i slaves (no handheld necessary)
<p>Advanced AS-i diagnostics</p> 	<ul style="list-style-type: none"> display of AS-i slaves which caused configuration errors judgement of the quality of the AS-i communication by means of error counters for every AS-i slave extended AS-i diagnostic functions AS-i Safety diagnostic without additional software for the AS-i monitor possible
<p>AS-i Master identity</p>	<ul style="list-style-type: none"> reading and writing of AS-i Master and AS-i Control flags
<p>Further functions</p>	<ul style="list-style-type: none"> offline/online mode opening and saving of AS-i configuration files opening and saving of AWL-files
<p>Can be used with the following AS-i Masters</p>	<ul style="list-style-type: none"> AS-i/PROFIBUS Gateways, AS-i/Modbus Gateways, AS-i/DeviceNet Gateways, AS-i/Ethernet TCP/IP Gateway AS-i Control - AS-i Master with RS 232, RS 485, RS 422 AS-i PC2, AS-i PC104, AS-i PCI Board AS-i Master/Scanner for Allen-Bradley ControlLogix, CompactLogix/Micro-Logix 1500