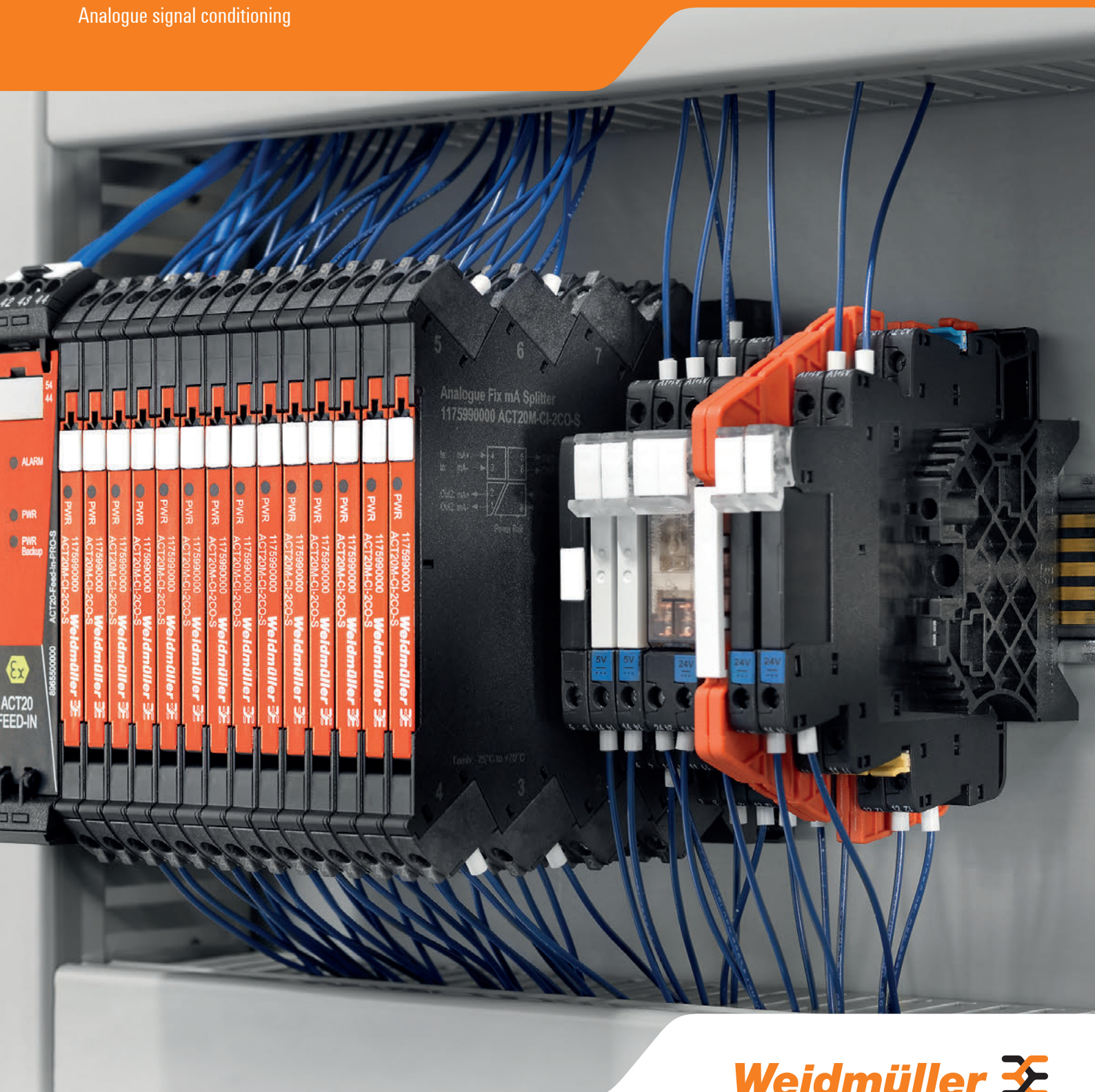


**Your system generates a large amount of analogue signals**  
**We process them in a very small amount of space**  
**Let's connect.**

Analogue signal conditioning

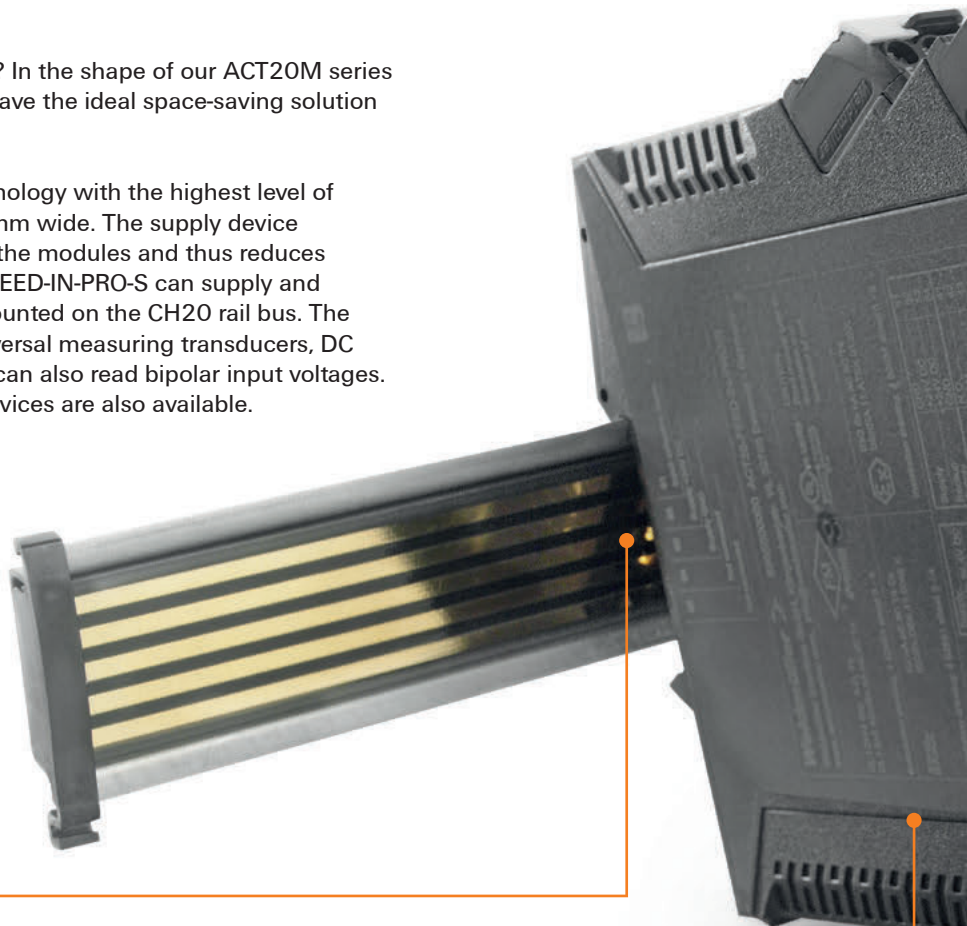


# ACT20M signal converter

## Reliable conversion and isolation of signals with the ACT20M product family

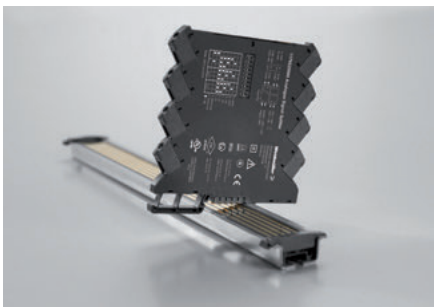
Looking for more space in your switch cabinet? In the shape of our ACT20M series and our ACT20-FEED-IN supply modules, we have the ideal space-saving solution for you. Let's connect.

The ACT20M series combines innovative technology with the highest level of functionality in an electronics housing only 6 mm wide. The supply device eliminates the need to wire a power supply to the modules and thus reduces installation time by at least 30%. The ACT20-FEED-IN-PRO-S can supply and monitor as many as 120 devices which are mounted on the CH20 rail bus. The ACT20M series includes passive isolators, universal measuring transducers, DC isolating amplifiers and signal splitters, which can also read bipolar input voltages. Temperature transducers and power-supply devices are also available.



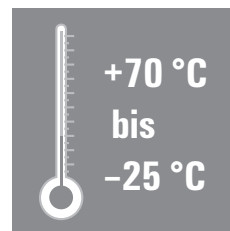
### Fast and simple installation

The ability to snap modules onto the rail bus ensures that the power supply can be quickly and easily installed. Power can be supplied via a supply module or any ACT20M module..



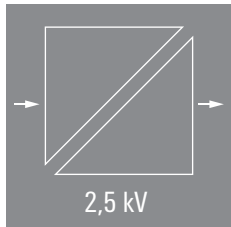
### Robust

ACT20M signal converters operate reliably in a wide temperature range spanning  $-25^{\circ}\text{C}$  to  $+70^{\circ}\text{C}$ .



**High process reliability**

Galvanic isolation of 2.5 kV (300 V rated voltage), and a high measurement accuracy of up to 0.05% ensures process reliability.

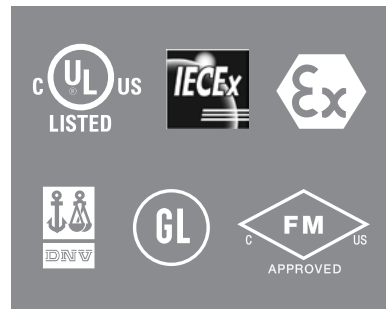


**Simple configuration**

The device is configured quickly and easily using the DIP switch or with manufacturer-independent FDT/DTM software, for example WI-Manager



**They can be used around the world and in a variety of applications**



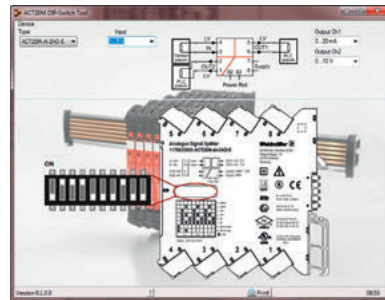
**They can be customised to your application**

VARITECTOR SPC pluggable lightning and surge protection with troubleshooting and remote control features.



**The DIP switch can be configured simply on the module**

In the "ACT20M Tool" software, simply select the type of input and output, and set the DIP switch configuration as displayed.

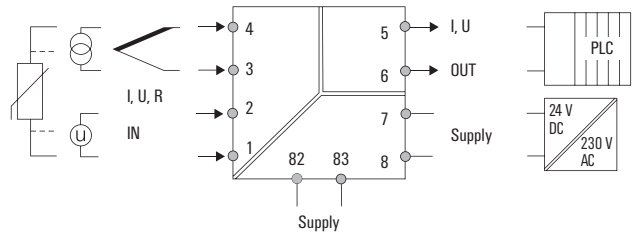


# You have individual requirements

## We have a flexible product range

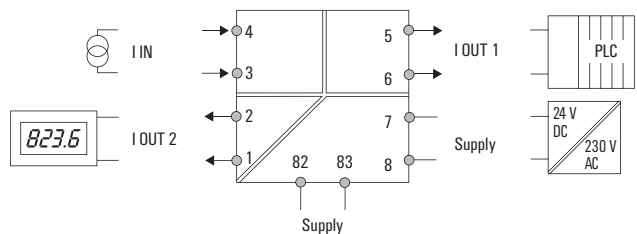
### ACT20M-UI-AO-S

Universal measuring transducer for acquiring, isolating and converting analogue V/I signals, 2/3/4-wire RTD and TC temperature sensors. 3-way isolation and very good isolation properties for the external power supply guarantee a high level of accuracy. The device is configured using FDT/DTM software.



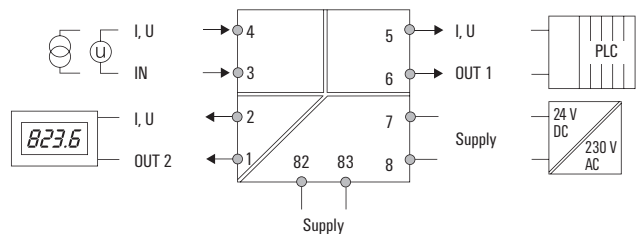
### ACT20M-CI-2CO-S

0(4)–20 mA DC current splitter with fixed settings and 4-way isolation for doubling the input signal. The sensor signal can be simultaneously transmitted to a controller and evaluated by an external display.



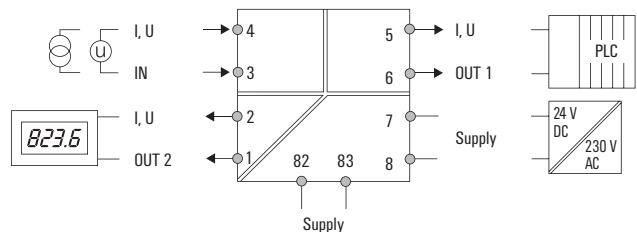
### ACT20M-AI-2AO-S

The signal splitter for analogue V/I signals features 4-way isolation and can be configured using a DIP switch. The input signal is doubled on the output side so it can, for example, be transmitted simultaneously to a controller and a display.



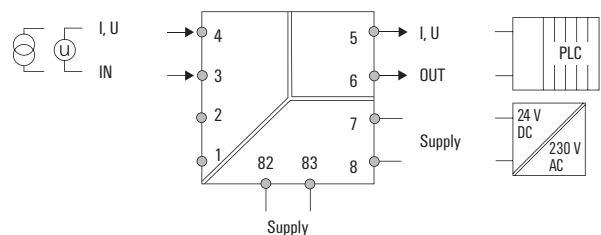
### ACT20M-BAI-2AO-S

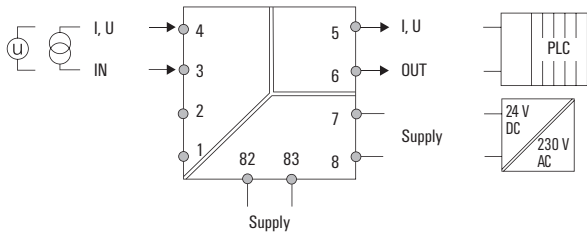
The signal splitter for converting bipolar analogue input signals to unipolar output signals can be configured using a DIP switch. The input signal is doubled on the output side and can, for example, be transmitted simultaneously to a controller and a display. The device has 4-way isolation and selectable filtering properties for slow and fast signal acquisition.



### ACT20M-AI-AO-E-S

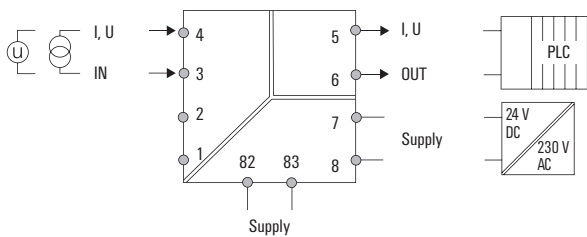
Universal V/I DC converter, configurable with a DIP switch, without sensor feed. Features 3-way isolation and an external power source.





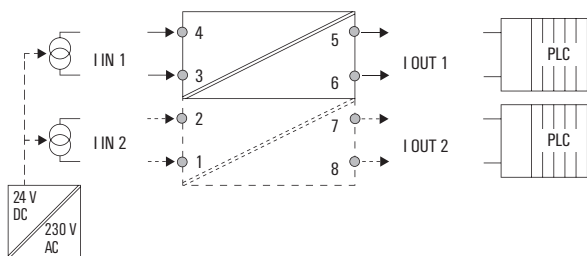
### ACT20M-AI-AO-S

Universal V/I supply isolator, configurable with a DIP switch. Passive sensors can be supplied directly with power. 3-way isolation and an external power source guarantee a high level of accuracy.



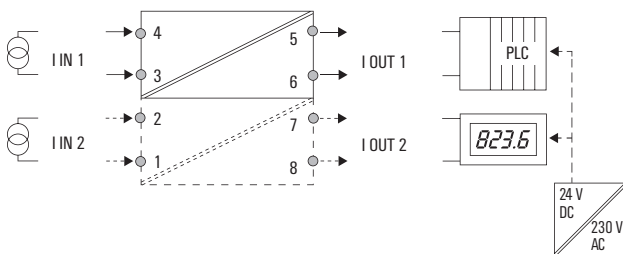
### ACT20M-BAI-AO-S

Signal converter, configurable with a DIP switch, for converting bipolar analogue input signals into unipolar analogue output signals. The device has high 3-way isolation and selectable filtering properties for slow and fast signal acquisition.



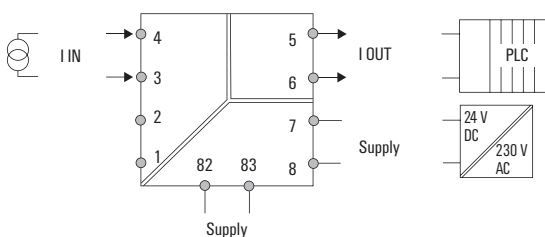
### ACT20M-CI-CO-ILP-S and ACT20M-2CI-2CO-ILP-S

1 or 2-channel output-current loop powered passive isolator. Safe transmission and isolation of 0(4)–20 mA signals in applications where no external source of power is available.



### ACT20M-CI-CO-OLP-S and ACT20M-2CI-2CO-OLP-S

1 or 2-channel output-current loop powered signal isolator for 0(4)–20 mA input signals. Safe transmission and isolation of DC current signals where power is supplied to the isolator in a decentralised way through the PLC/DCS.



### ACT20M-CI-CO-S

0(4)–20 mA DC current isolator with fixed settings, 3-way isolation and a high level of accuracy. Specially designed for the transmission of the most frequently used types of signals in analogue signal processing.

# ACT20M

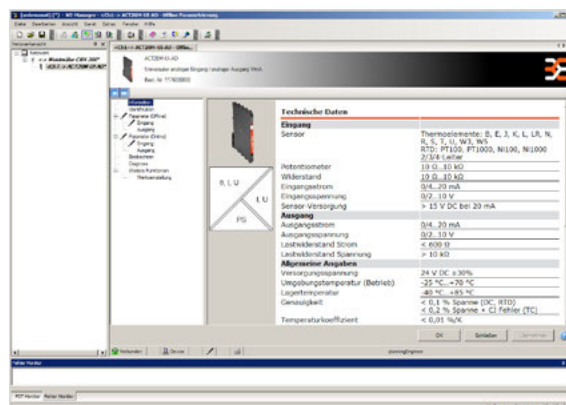
			OUTPUT			
INPUT	Power supply	Function	Current			
			0-20 mA 1-channel	4-20 mA 1-channel	2 x 0-20 mA 2-channel / splitter	2 x 4-20 mA 2-channel / splitter
<b>Current</b>						
0-20 mA	24 V DC and rail bus	Universal	ACT20M-UI-A0-S	ACT20M-UI-A0-S		
		V/I			ACT20M-AI-2A0-S	ACT20M-AI-2A0-S
		Current			ACT20M-CI-2C0-S	ACT20M-CI-2C0-S
		V/I	ACT20M-AI-A0-E-S	ACT20M-AI-A0-E-S		
		V/I	ACT20M-AI-A0-S	ACT20M-AI-A0-S		
	Loop-powered output	Current			ACT20M-CI-C0-OLP-S	
		Current				ACT20M-2CI-2C0-OLP-S
		Current				
		Current				
		Current				
4-20 mA	24 V DC and rail bus	Universal	ACT20M-UI-A0-S	ACT20M-UI-A0-S		
		V/I			ACT20M-AI-2A0-S	ACT20M-AI-2A0-S
		Current			ACT20M-CI-2C0-S	ACT20M-CI-2C0-S
		V/I	ACT20M-AI-A0-E-S	ACT20M-AI-A0-E-S		
		V/I	ACT20M-AI-A0-S	ACT20M-AI-A0-S		
1 x 4-20 mA	Loop-powered output	Current		ACT20M-CI-C0-OLP-S		
		Current				ACT20M-2CI-2C0-OLP-S
2 x 4-20 mA	Loop-powered input	Current			ACT20M-2CI-2C0-ILP-S	ACT20M-2CI-2C0-ILP-S
		Current	ACT20M-CI-C0-ILP-S	ACT20M-CI-C0-ILP-S		
-10 mA to 0 to 10 mA -20 mA to 0 to 20 mA with sensor power supply	24 V DC and rail bus	Bipolar	ACT20M-BAI-A0-S	ACT20M-BAI-A0-S	ACT20M-BAI-2A0-S	ACT20M-BAI-2A0-S
		Bipolar	ACT20M-BAI-A0-S	ACT20M-BAI-A0-S	ACT20M-BAI-2A0-S	ACT20M-BAI-2A0-S
		Universal	ACT20M-UI-A0-S	ACT20M-UI-A0-S		
		V/I	ACT20M-AI-A0-S	ACT20M-AI-A0-S		
		V/I	ACT20M-AI-A0-S	ACT20M-AI-A0-S		
<b>Voltage</b>						
0-5 V 1-5 V	24 V DC and rail bus	Universal	ACT20M-UI-A0-S	ACT20M-UI-A0-S		
		V/I	ACT20M-AI-A0-E-S	ACT20M-AI-A0-E-S		
		V/I	ACT20M-AI-A0-S	ACT20M-AI-A0-S		
0-10 V 2-10 V		Universal	ACT20M-UI-A0-S	ACT20M-UI-A0-S		
		V/I	ACT20M-AI-A0-E-S	ACT20M-AI-A0-E-S		
		V/I	ACT20M-AI-A0-S	ACT20M-AI-A0-S		
-5 V to 0 to 5 V -10 V to 0 to 10 V		Bipolar	ACT20M-BAI-A0-S	ACT20M-BAI-A0-S	ACT20M-BAI-2A0-S	ACT20M-BAI-2A0-S
		Bipolar	ACT20M-BAI-A0-S	ACT20M-BAI-A0-S	ACT20M-BAI-2A0-S	ACT20M-BAI-2A0-S
<b>2, 3 or 4-wire</b>						
PT100	OLP	Temp.		ACT20M-RTCI-C0-OLP-S *)		
		Temp.		ACT20M-RTI-C0-E0LP-S *)		
	24 V DC and rail bus	Temp.	ACT20M-RTI-A0-E-S *)	ACT20M-RTI-A0-E-S *)		
		Universal	ACT20M-UI-A0-S	ACT20M-UI-A0-S		
		Temp.	ACT20M-RTI-A0-S *)	ACT20M-RTI-A0-S *)		
		Temp.	ACT20M-RTCI-A0-S *)	ACT20M-RTCI-A0-S *)		
		Universal	ACT20M-UI-A0-S	ACT20M-UI-A0-S		
		Universal	ACT20M-UI-A0-S	ACT20M-UI-A0-S		
	Ni100	Universal	ACT20M-UI-A0-S	ACT20M-UI-A0-S		
	Ni1000	Universal	ACT20M-UI-A0-S	ACT20M-UI-A0-S		
<b>TC</b>						
B	24 V DC and rail bus	Universal	ACT20M-UI-A0-S	ACT20M-UI-A0-S		
Universal		ACT20M-UI-A0-S	ACT20M-UI-A0-S			
J	OLP	Temp.		ACT20M-RTCI-C0-OLP-S *)		
		Temp.	ACT20M-TCI-A0-E-S *)	ACT20M-TCI-A0-E-S *)		
	24 V DC and rail bus	Universal	ACT20M-UI-A0-S	ACT20M-UI-A0-S		
		Temp.	ACT20M-TCI-A0-S *)	ACT20M-TCI-A0-S *)		
K	OLP	Temp.		ACT20M-RTCI-C0-OLP-S *)		
		Temp.	ACT20M-TCI-A0-E-S *)	ACT20M-TCI-A0-E-S *)		
	24 V DC and rail bus	Universal	ACT20M-UI-A0-S	ACT20M-UI-A0-S		
		Temp.	ACT20M-TCI-A0-S *)	ACT20M-TCI-A0-S *)		
		Temp.	ACT20M-RTCI-A0-S *)	ACT20M-RTCI-A0-S *)		
L		Universal	ACT20M-UI-A0-S	ACT20M-UI-A0-S		
LR		Universal	ACT20M-UI-A0-S	ACT20M-UI-A0-S		
N		Universal	ACT20M-UI-A0-S	ACT20M-UI-A0-S		
R		Universal	ACT20M-UI-A0-S	ACT20M-UI-A0-S		
S		Universal	ACT20M-UI-A0-S	ACT20M-UI-A0-S		
T		Universal	ACT20M-UI-A0-S	ACT20M-UI-A0-S		
U		Universal	ACT20M-UI-A0-S	ACT20M-UI-A0-S		
W3		Universal	ACT20M-UI-A0-S	ACT20M-UI-A0-S		
W5		Universal	ACT20M-UI-A0-S	ACT20M-UI-A0-S		
<b>Potentiometer</b>						
10R-100k	24 V DC and rail bus	Universal	ACT20M-UI-A0-S	ACT20M-UI-A0-S		
<b>R</b>						
10R-100k	24 V DC and rail bus	Universal	ACT20M-UI-A0-S	ACT20M-UI-A0-S		
<b>Note:</b> *) Available for delivery from July 2013						



# Would you like a manufacturer-independent device configuration?

Our ACT20M can be operated with FDT/DTM software.

ACT20M signal converters can be configured with a PC using Weidmüller's own FDT/DTM WI-Manager frame application. Weidmüller makes the Device Type Manager (DTM) available for all of its configurable signal converters. Weidmüller DTMs control all of the functions for each individual device, have a large number of graphical elements and also provide helpful additional information.



Link to the Internet page for the FDT Group:  
<http://fdtgroup.org>



# Fax reply

+49 52 31 14-292083

**Convert your signals with the ACT20M, the signal converter that is only 6 mm wide. We will respond to all your questions immediately.**

Let's connect.

Yes, I am interested in the new ACT20M series from Weidmüller.  
**Please send me your latest catalogue on analogue signal processing.**

Yes, I have some questions about the ACT20M series from Weidmüller.  
**Please get in touch with me over the phone or via e-mail.\***

Yes, I would like some individual advice on the ACT20M series from Weidmüller.  
**Please get in touch with me to arrange an individual appointment.\***

Company

Mr  Ms

Last name

First name

Function

Street

Postcode / City

\* If you prefer contact over the telephone/via e-mail, please provide us with the following details:

Telephone

Fax

E-mail

## **Weidmüller – Partner in Industrial Connectivity**

As experienced experts we support our customers and partners around the world with products, solutions and services in the industrial environment of power, signal and data. We are at home in their industries and markets and know the technological challenges of tomorrow. We are therefore continuously developing innovative, sustainable and useful solutions for their individual needs. Together we set standards in Industrial Connectivity.

Weidmüller Interface GmbH & Co. KG  
Klingenbergstraße 16  
32758 Detmold, Germany  
T +49 5231 14-0  
F +49 5231 14-292083  
info@weidmueller.com  
www.weidmueller.com



Order number: 1440330000/03/2013/SMDM