
Mitsubishi GOT-Series HMI Basic Training Course (1 Day)

One-day introductory course explaining the set-up and basic communication between the HMI and PLC.

The course will use Mitsubishi GT Designer3 software and covers the basic dynamic and test objects that are useful for most projects.

Mitsubishi products covered

This course uses the FX or Modular PLC simulator system with the GOT-series HMIs.

Price and availability

See our website for a schedule of our training course dates. To book your places & check availability, please e-mail training@lca.co.uk or call 01254 685900.

The cost for this one day course is £275 plus VAT per delegate.

The cost includes course documentation and a buffet lunch. Note, accommodation is not included.

Course content

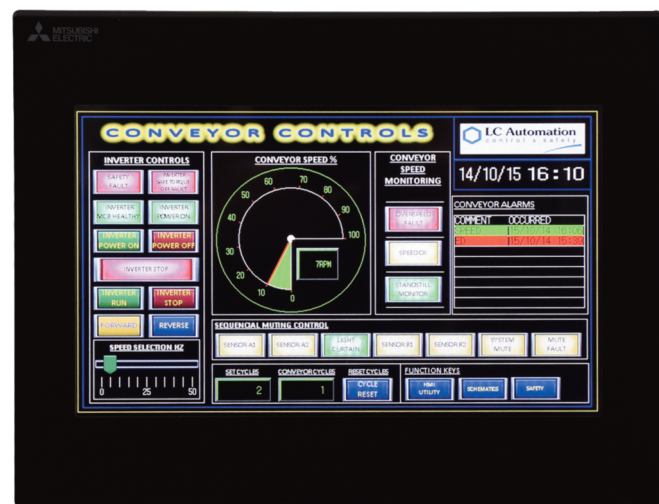
- Introduction to HMI's
- Basic set-up of the terminal
- Basic programming of the terminal from the PC software
- Application examples and test

Skills requirement

- No previous experience of Mitsubishi or another manufacturers' HMI products is required
- An understanding of basic electrical principles would be an advantage
- Basic PLC knowledge would be an advantage

Suggested further courses

- Mitsubishi FX-Series PLC introduction (2 days)
- Mitsubishi Q-Series PLC introduction (2 days)



Courses must be booked in advance either by full payment or a valid purchase order number. Cancellations received less than 1 month prior to course start date will be subject to a 50% charge, (less than 2 weeks prior to course start date, the full fee is payable). Substitute delegates are welcome at any time with no extra charge. We reserve the right to alter or cancel dates and the full fee will be returned in these cases.

Call LC Automation on 01254 685900 for details

Or fax us on 01254 685901 or e-mail training@lca.co.uk to book your places