

Mitsubishi GOT-Series HMI Intermediate Training Course

Two-day training course in Blackburn - £1200 per person

Two-day intermediate course explaining the set-up and development of larger projects between the HMI and PLC.

What Mitsubishi Products Does This Course Cover?

You will use a special purpose GOT-series HMI rig, PLC rig and GT Designer.

Price and Availability

See our website for a schedule of our training course dates. To book your places and check availability, please e-mail training@lca.co.uk or call 01254 685900.

The cost for this two-day course is £1200 plus VAT per delegate.

The cost includes course documentation and a buffet lunch.

What Does the Course Include?

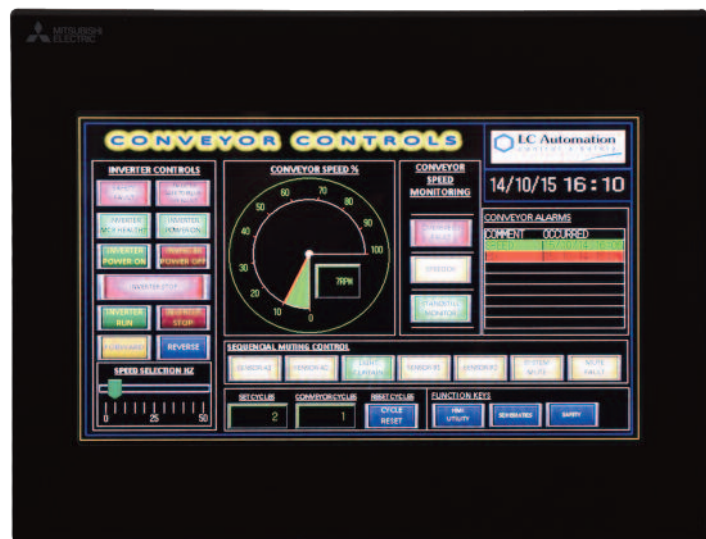
- GT Designer help tools
- Naming screens
- Displaying object details
- Features of devices complimenting the PLC
- Limiting, scaling and manipulating numbers
- Changing object appearance on demand
- Handling simple alarms
- Simple recipe control and access control

What Skills Do I Need?

- Experience of industrial control systems
- Must have an introductory knowledge of Mitsubishi
- Experience of Mitsubishi GOT-series HMI's (preferably attended the GOT HMI Introductory course)

Suggested Further Courses

- Mitsubishi GOT HMI Advanced (2 days)



Call LC Automation on 01254 685900 for details