

Rittal – The System.

Faster – better – everywhere.

► Terminal boxes KL without gland plate – KL 1527.510

Date : Mar 4, 2020

ENCLOSURES

POWER DISTRIBUTION

CLIMATE CONTROL

IT INFRASTRUCTURE

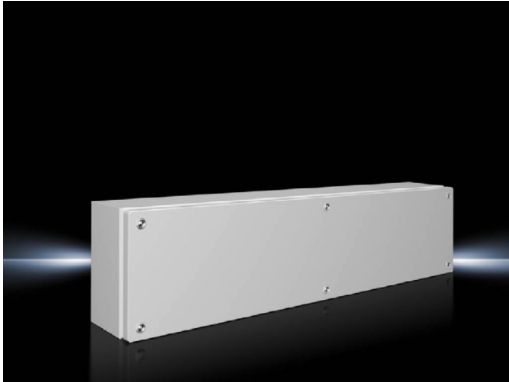
SOFTWARE & SERVICES

FRIEDHELM LOH GROUP



Terminal boxes KL without gland plate – KL 1527.510

created: 04.03.2020 build on www.rittal.com/uk-en



Product description

Material:	Enclosure: Sheet steel Cover: Sheet steel, all-round foamed-in PU seal
Surface finish:	Enclosure and cover: Dipcoat primed, powder-coated on the outside, textured paint
Colour:	RAL 7035
Protection category IP to IEC 60 529:	IP 66
Protection category NEMA:	NEMA 4
IK Code:	IK08
Supply includes:	Enclosure with cover Quick-release fastener including plastic bushes
Basic material:	Sheet steel

Product features

Dimensions:	Width: 800 mm Height: 200 mm Depth: 120 mm
Material thickness:	Enclosure: 1.25 mm Cover: 1.25 mm
Packs of:	1 pc(s).

Weight/pack:	6.8 kg
EAN:	4028177251328
Customs tariff number:	85389099
ETIM 7.0:	EC002713
ETIM 6.0:	EC002713
eCl@ss 8.0/8.1:	27180101
eCl@ss 6.0/6.1:	27180101
Product description:	KL Terminal box, WHD: 800x200x120 mm, Sheet steel, without mounting plate, with cover, without gland plate
Approvals	
Approvals:	Bureau Veritas CSA Lloyds Register of Shipping RRR Russian Maritime Register of Shipping TÜV UL + C-UL
Certificates:	EAC IK-Code Protection category
Declarations:	Declaration of conformity