

Rittal – The System.

Faster – better – everywhere.

Gland plate for CM, TP – CM 5001.223

Date : Jun 16, 2020

ENCLOSURES

POWER DISTRIBUTION

CLIMATE CONTROL

IT INFRASTRUCTURE

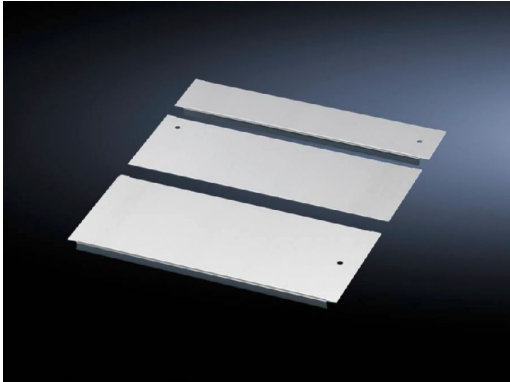
SOFTWARE & SERVICES

FRIEDHELM LOH GROUP



Gland plate for CM, TP – CM 5001.223

created: 16.06.2020 build on www.rittal.com/uk-en



Product description

Description:	Potential equalisation is provided via assembly components and earthing points.
Material:	Sheet steel
Surface finish:	Zinc-plated
Supply includes:	Assembly parts
Note:	For greater stability and universal cable entry, the base opening is divided in the width for 1000, 1200 and 1600 mm wide enclosures, and is suitable for various configurations. Several gland module plates need to be combined to close off the base completely in the TS-IT

Product features

To fit:	Enclosure type: TS IT Enclosure type: TS Enclosure type: CM Enclosure type: TP Width: = 800 mm
----------------	--

Dimensions:	Depth: 250 mm
--------------------	---------------

Packs of:	1 pc(s).
------------------	----------

Weight/pack:	2.38 kg
---------------------	---------

Copper weight (kg per piece):	0
--------------------------------------	---

EAN: 4028177523272

Customs tariff number: 73269098

ETIM 7.0: EC002620

ETIM 6.0: EC002620

eCl@ss 8.0/8.1: 27189261

eCl@ss 6.0/6.1: 27189261

Product description: CM Gland plate, for CM, TP, D: 250 mm, for W: 800 mm
