

# Rittal – The System.

Faster – better – everywhere.

## Gland plate for CM, TP – CM 5001.218

Date : Jan 27, 2020

ENCLOSURES

POWER DISTRIBUTION

CLIMATE CONTROL

IT INFRASTRUCTURE

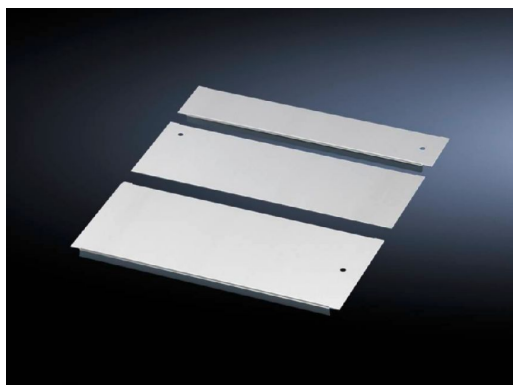
SOFTWARE & SERVICES

FRIEDHELM LOH GROUP



# Gland plate for CM, TP – CM 5001.218

created: 27.01.2020 build on [www.rittal.com/uk-en](http://www.rittal.com/uk-en)



## Product description

<b>Description:</b>	Potential equalisation is provided via assembly components and earthing points.
<b>Material:</b>	Sheet steel
<b>Surface finish:</b>	Zinc-plated
<b>Supply includes:</b>	Assembly parts
<b>Note:</b>	For greater stability and universal cable entry, the base opening is divided in the width for 1000, 1200 and 1600 mm wide enclosures, and is suitable for various configurations. Several gland module plates need to be combined to close off the base completely in the TS-IT

## Product features

<b>To fit:</b>	Enclosure type: TS IT Enclosure type: TS Enclosure type: CM Enclosure type: TP Width: = 600 mm
----------------	--

<b>Dimensions:</b>	Depth: 150 mm
--------------------	---------------

<b>Packs of:</b>	1 pc(s).
------------------	----------

<b>Weight/pack:</b>	1.1 kg
---------------------	--------

<b>Copper weight (kg per piece):</b>	0
--------------------------------------	---

**EAN:** 4028177523227

---

**Customs tariff number:** 73269098

---

**ETIM 7.0:** EC002620

---

**ETIM 6.0:** EC002620

---

**eCl@ss 8.0/8.1:** 27189261

---

**eCl@ss 6.0/6.1:** 27189261

---

**Product description:** CM Gland plate, for CM, TP, D: 150 mm, for W: 600 mm

---