

Industry-standard Cable-entry and Strain-relief System

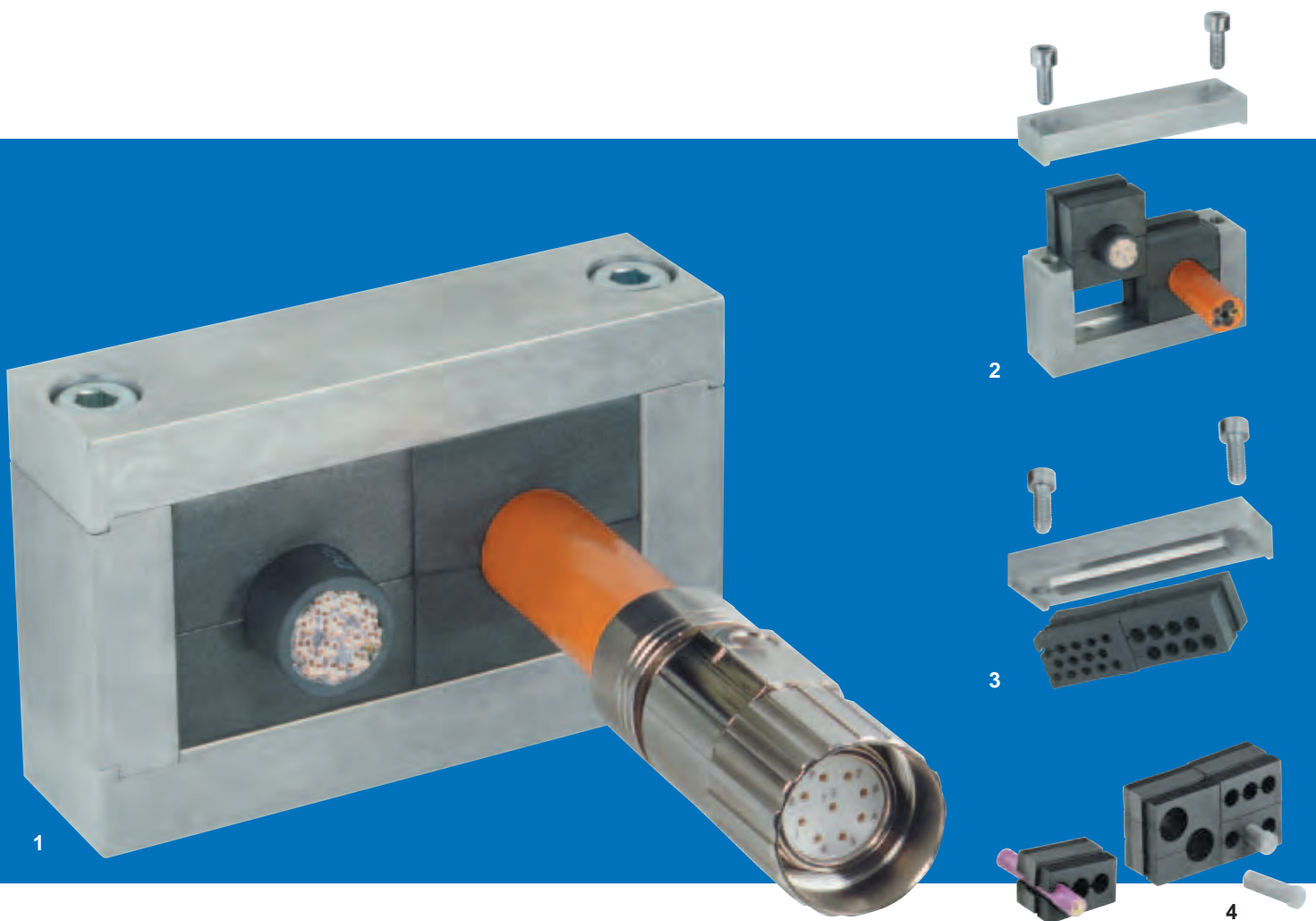
# Cablefix® Vario



Systematic Technology

# Cablefix® Vario

The cost-effective cable-entry system for all cables and cable-assemblies fitted with a connector



**Illustrations:** Quick assembly via rubber modules (Fig.2)  
Tongue and groove system (Fig.3)  
Easy lead-through, e.g. of assembled cables, via slots that extend right to the hole openings. Holes that are not needed can be closed off with blanking plugs (Fig.4)

Cost-effective assembly of systems can now be achieved thanks to Cablefix®Vario, which offers a solid frame and a wide selection of rubber modules, all boasting excellent material qualities. Multiple options offer a solution to every fixing problem. The stable frame construction of the Cablefix®Vario clamping frame is available in either high-grade glass-reinforced nylon (Polyamide 66 GF30) with additional internal brass reinforcement - or alternatively entirely in aluminium.

**The advantages at a glance:**

- Thermal stability -40°C to 135°C
- Embrittlement point below -40°C ensures good flexibility at low temperatures
- Good flame retardant properties
- Highly weather-resistant
- Resistant to UV, ozone, oils and fuel, acids and alkalis, solvents and sea water
- Minimum space requirement thanks to compact design
- Identical construction of panel cable-entry frame and strain-relief frame
- Simple insertion thanks to tongue and groove system
- No internal supports
- Panel cable-entry system supplied with drilling pattern and flat gasket
- Strain-relief system supplied with drilling pattern
- Ideal for retrofitting
- IP 65 protection rating



Rubber modules



Clamping frame, made from PA6.6 GF30, as cable-entry system with strain-relief



Clamping frame, made from aluminium, as cable-entry system with strain-relief

Rubber modules, material TPE					Matching blanking plugs, PA6 GF15				
Part no.	Type	Clamping range	Number of holes	Pkg. units	Part no.	Type	Diameter Ø (mm)	Length (mm)	Pkg. units
606150	VK0	Vollmaterial	0	5					
606151	VK4	4 - 4,5	14	5	606250	BL4	4	30	50
606152	VK5	4,5 - 5,5	8	5	606251	BL5	5	30	50
606153	VK6	5,5 - 6,5	8	5	606252	BL6	6	30	50
606154	VK7	6,5 - 7,5	5	5	606253	BL7	7	30	50
606155	VK8	7,5 - 8,5	5	5	606254	BL8	8	30	50
606156	VK9	8,5 - 9,5	3	5	606255	BL9	9	30	50
606157	VK10	9,5 - 10,5	3	5	606256	BL10	10	30	50
606158	VK12	10,5-12,5	2	5	606257	BL12	12	30	50
606159	VK14	12,5-14,5	2	5	606258	BL14	14	30	50
606160	VK16	14,5-16,5	2	5	606259	BL16	16	30	50
606200	VG0	Solid material	0	3					
606201	VG18	16,5-18,5	2	3	606260	BL18	18	30	50
606202	VG20	18,5-20,5	1	3					
606203	VG22	20,5-22,5	1	3					
606204	VG24	22,5-24,5	1	3					
606205	VG26	24,5-26,5	1	3					
606206	VG28	26,5-28,5	1	3					
606207	VG30	28,5-30,5	1	3					
606208	VG32	30,5-32,5	1	3					
606209	VG34	32,5-34,5	1	3					

Clamping frame as cable-entry system with strain-relief						
Part no.	Type	Dimensions L x H x D	Unit* VK/VG	Pkg. units	With flat gasket and drilling pattern	Note
<b>Plastic PA66 GF30 with brass reinforcement</b>						
606050	KKLR 1	136x71x30	4/2	3	yes	
606051	KKLR 2	164x71x30	6/3	2	yes	
<b>Aluminium, barrel finished, can also be supplied anodized.</b>						
606001	AKLR 1	108x68x30	4/2	1	yes	
606002	AKLR 2	148x68x30	6/3	1	yes	
606003	AKLR 3	148x88x30	9/3+ 3	1	yes	
606004	AKLR 4	148x108x30	12/6	1	yes	
606005	AKLR 5	188x78x30	8/4	1	yes	
606006	AKLR 6	188x98x30	12/4+ 4	1	yes	
606007	AKLR 7	188x118x30	16/8	1	yes	
606040	AKLW 2	148x68x30	6/3	1	yes	Drilling pattern HAN 24

\* Unit corresponds to the number of rubber modules required, either type VK or VG

## Deutschland

Friedrich Lütze GmbH & Co. KG  
Postfach 12 24 (PLZ 71366)  
Bruckwiesenstraße 17-19  
D-71384 Weinstadt  
Tel.: +49 (0)71 51 60 53-0  
Fax: +49 (0)71 51 60 53-277(-288)  
info@luetze.de

### Lütze systems for highest industrial standards:

- ▶ Prepopulated  
C-track systems
- ▶ Lütze-LSC-wiring  
systems for all  
standard control  
panels
- ▶ Powerful module and  
interface technology
- ▶ Reliable suppression  
technology
- ▶ Efficient power  
supplies
- ▶ Automation systems  
for harsh environments

## United Kingdom

LÜTZE Ltd.  
Unit 3 Sandy Hill Park  
Sandy Way, Amington  
Tamworth, Staffs, B77 4DU  
Tel.: +44 (0)18 27 31333-0  
Fax: +44 (0)18 27 31333-2  
sales.gb@luetze.co.uk

## USA

LUTZE INC.  
13330 South Ridge Drive  
Charlotte, NC 28273  
Tel.: +1 (704) 504-0222  
Fax: +1 (704) 504 -0223  
info@lutze.com

## Österreich

LÜTZE Elektrotechnische  
Erzeugnisse Ges.m.b.H.  
Tel.: +43 (0)1 257 52 52-0  
Fax: +43 (0)1 257 52 52-20  
office@luetze.at

## Schweiz

LÜTZE AG  
Tel.: +41 (0)55 450 23 23  
Fax: +41 (0)55 450 23 13  
info@luetze.ch

## France

LÜTZE S.A.  
Tél.: +33 (0)1 34 18 77 00  
Fax: +33 (0)1 34 18 18 44  
lutze@lutze.fr

## Italia

Friedrich Lütze GmbH & Co. KG  
Tel.: +39 039 928 49 36  
Fax: +39 039 59 95 73  
info@luetze.it

## España

LUTZE, S.L.  
Tel.: +34 93 285 7480  
Fax: +34 93 285 7481  
info@lutze.es

# www.luetze.com