

Frontcom® Vario panel interface .....	88
Ethernet/Fieldbus connectors .....	89
Heavy duty connector kits .....	91
Cable glands and locknuts .....	92
Terminals .....	93
Markers .....	98
DIN terminal rails .....	98
EMC shield rails .....	99



## Frontcom® Vario

Weidmüller 

NEW

1

Plastic cover  
(with knob)Plastic cover  
(with key)

2



Insert plate

3



RJ45 insert



USB insert

4



Power socket



Universal socket

5



Touch protection

The FrontCom® Vario integrates multiple functions in one frame and is easy to install.

In addition to being extremely compact it has an attractive housing design that offers the highest impact resistance and fully meets the requirements of IP65 protection class.

**You will need to order:**

- 1 Cover (with knob or key)
- 2 Insert plate
- 3 Connection insert
- 4 Power socket
- 5 Touch protection (if required)

**Features**

- Takes up half the space of conventional service interfaces
- Fewer installation costs as the data, signal and power connections are housed in a single frame
- Future-proof technology thanks to data transmission pursuant to the latest Cat 6A standard
- Equipped for greater security and comfort during operation and maintenance tasks
- High flexibility thanks to a variety of possible customisations and combinations

**Technical specification**

Frame ..... Plastic cover  
Protection ..... IP65, when closed

**1 Cover**

Description	Order Code	List Price
Plastic cover with knob	1450510000	£17.20
Plastic cover with key	1450520000	£23.79

**2 Insert plate**

Description	Order Code	List Price
2 x data, 1 x power shielded insert plate	1450550000	£14.70
2 x data, 1 x power insert plate	1450630000	£6.60

**3 Connection inserts**

Description	Order Code	List Price
RJ45 insert coupler	1962840000	£8.19
USB insert flange, type A	1487920000	£9.42

**4 Power sockets**

Description	Order Code	List Price
Power socket	1450770000	£10.37
Universal power socket (EU, US, CN, UK, IND)	1529570000	£9.52

**5 Touch protection**

Description	Order Code	List Price
Touch protection	1450820000	£8.47

# Industrial Ethernet passive components



FrontCom® micro connectors

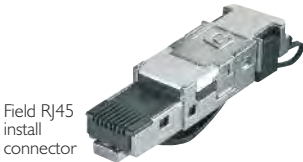
## FrontCom® micro connectors

### Technical specification

Category . . . . . Cat.6A/class EA  
 (ISO/IEC 11801 2010)  
 Degree of protection . . . IP65 according  
 (with cap on) . . . . . to DIN EN 60529

Housing main material . . . PA UL 94 V0  
 Plugging cycles . . . . . 750

Description	Order Code	List Price
Micro RJ45 connector	1018790000	£11.99
Micro USB connector; A-A	1018840000	£11.14



Field RJ45 install connector



Field RJ45 install 90° connector

Tool free Ethernet installation with outlet cabling in any 90° orientation to the plug.

## Field install connectors

### Features

- Tool free installation
- From AWG24 to AWG22 cable capable
- 10Gbit speed capability

### Technical specification

Degree of protection . . . . . IP20  
 Plugging cycles . . . . . 750  
 Cable entry . . . . . 360°  
 Configuration . . . . . 8 wire field assembled  
 RJ45 plug with colour coding,  
 TIA A/B/ProfiNet, multiport ready

Description	Cross Section	Speed	Order Code	List Price
Field install RJ45 straight connector	0.85-1.6mm	10Gbit	1963600000	£10.71
Field install RJ45 90° connector	0.85-1.1mm	10Gbit	1518080000	£14.48
Field install RJ45 90° connector	1.1-1.6mm	10Gbit	1992870000	£13.05
Field install RJ45 90° connector	1.1-1.6mm	100Mbit	1518100000	£13.05

## DIN rail outlet

### Technical specification

Category . . . . . Cat.6A/class EA  
 (ISO/IEC 11801 2010)  
 Degree of protection . . . . . IP20  
 Plugging cycles . . . . . 750

Connector standard  
 RJ45 . . . . . IEC60603-7-5  
 ST multimode . . . . . IEC61754-2  
 SC multimode . . . . . IEC61754-4



SC multimode

ST multimode

Description	Order Code	List Price
RJ45	8808360000	£16.11
SC multimode (fibre optic)	8946970000	£16.29
ST multimode (fibre optic)	8808340000	£16.11

## Fieldbus/Ethernet panel connectors



Fully shielded panel entry and in-panel connections for most industrial fieldbus networks.

Suitable for Ethernet-IP, Modbus-TCP, ProfiNet, EtherCat, CC-Link-IE, PowerLink and TCP-IP.

Description	Order Code	List Price
Front panel Cat5e RJ45 connector; 8 pole	492075	£7.83
Front panel Cat6 RJ45 connector; 8 pole	491075	£28.80
Front panel USB 3.0 connector	490112	£10.31
Front panel USB 3.0 connector with 0.3m cable	490113.0030	£10.59
DIN rail converter - Cat6 cable to RJ45; 8 pole	772104	£24.45
Angled M12 female to Cat5e RJ45 connector; 4 pole	490105	£21.45
Straight M12 female to Cat5e RJ45 connector; 4 pole	490106	£22.20
Angled M12 female to Cat6 RJ45 connector; 8 pole	490107	£26.11
Straight M12 female to Cat6 RJ45 connector; 8 pole	490108	£26.11

## Fieldbus/Ethernet in-line connectors



Fully shielded connectors for in-line applications.

Description	Order Code	List Price
Cat5e RJ45 straight connector for Ethernet; 8 pole	772100	£12.47
Cat5e RJ45 straight connector for ProfiNet; 4 pole	772101	£12.15
Cat6 RJ45 straight connector for Ethernet; 8 pole	490128	£10.11
Cat6A RJ45-M straight connector for SuperFlex cables; 8 pole	490138	£10.11
Cat6 RJ45 right-angled connector for Ethernet; 8 pole	490151	£12.57
M12 4 pole male straight connector (A code)	490050	£12.22
M12 5 pole male straight connector for CAN/DeviceNet	490051	£18.54
M12 8 pole male straight connector for Ethernet	490054	£22.10
M12 4 pole female straight connector (A code)	490052	£16.34
M12 5 pole female straight connector for CAN/DeviceNet	490053	£18.44
M12 8 pole female straight connector for Ethernet	490077	£22.50
M12 5 pole male straight connector for ProfiBus	490072	£18.42
M12 5 pole female straight connector for ProfiBus	490073	£18.42
M12 4 pole male straight connector for Ethernet/ProfiNet	490074	£13.43

## Standard ProfiBus connectors



Industry standard ProfiBus connectors. Twin cable entries for loop-through wiring. Switchable

terminating resistors for end of line situations. Screw terminal and fast connection (FC) types.

Description	PG Port	Terminals	Suitable for	Order Code	List Price
90° connector	No	Screw	Any cable	490155	£25.00
90° connector	Yes	Screw	Any cable	490156	£35.00
90° connector	No	FC	FC cable only	490158	£28.00
90° connector	Yes	FC	FC cable only	490159	£38.00
35° connector	No	Screw	Any cable	490157	£25.00
35° connector	Yes	Screw	Any cable	490163	£35.00
180° connector, plastic	No	FC	FC cable only	490160	£32.00
180° connector, metal case	No	Screw	Any cable	490162	£35.00

# Rockstar® heavy duty connector kits



Rockstar® heavy duty connector kits are standardised kits for assembling complete plug-in connectors.

Heavy duty connectors are used wherever there is a need for secure, simple and time saving assembly of machinery and facilities.

The connector housings are made of die cast aluminium and offer excellent protection against dirt, moisture and mechanical stress. Selecting the correct connector is now easier than ever, saving both time and money.

The HA series are small square connectors and the HE series are rectangular, with size dependent on the number of poles.



HA series – 3 pole, top entry



HE series – 6 pole, top entry



HE series – 32 pole, side entry

- Kits consist of:**
- Male insert
  - Female insert
  - Cable housing
  - Bulkhead housing
  - Cable gland

### Technical specification

Cable gland	..... Metric
Housing	..... Metal
Material	..... Diecast aluminium
Surface finish	..... Powder coating
Operating temperature	..... -40° to +100°C
Type of connection	..... Screw

### HA series – square

				Top Entry		90° Side Entry	
Size	No. of Poles	Rated Voltage	Rated Current	Order Code	List Price	Order Code	List Price
1	3	250V	22A	1802470000	£23.08	1802450000	£24.63
1	4	250V	22A	1802440000	£23.08	1802700000	£32.79

### HE series – rectangular

				Top Entry		90° Side Entry	
Size	No. of Poles	Rated Voltage	Rated Current	Order Code	List Price	Order Code	List Price
3	6	500V	24A	1802740000	£35.91	1802730000	£37.18
4	10	500V	16A	1802410000	£47.60	1802420000	£48.80
6	16	500V	16A	1802390000	£50.72	1802400000	£51.98
8	24	500V	16A	1802380000	£66.90	1802480000	£60.55
10	32	500V	16A	—	—	1802370000	£152.99
12	48	500V	16A	—	—	1802360000	£224.46

The kits are listed with metric cable glands  
 PG versions are also available – contact sales for further information

## Cable glands and locknuts



Quick fit EMC metal glands and locknuts



Nickel-plated glands and locknuts



Grey plastic glands and locknuts



Black plastic glands and locknuts

Nickel plated brass and tough plastic cable glands for standard and EMC applications. IP68 sealing standard on all ranges.

Special insert designed to terminate screened cables on EMC versions. EMC locknuts ensure proper screen connection.

### Quick fit EMC metal

Description	Additional Information	Order Code	List Price
M12 EMC cable gland	For screened cables 3-6.5mm	600370	£2.79
M12 EMC locknut		600460	£0.42
M16 EMC metal cable gland	For screened cables 5.5-10mm	600371	£2.51
M16 EMC locknut		600461	£0.50
M20 EMC metal cable gland	For screened cables 8-13mm	600372	£3.89
M20 EMC locknut		600462	£0.54
M25 EMC metal cable gland	For screened cables 11-18mm	600373	£4.95
M25 EMC locknut		600463	£0.83
M32 EMC metal cable gland	For screened cables 15-21mm	600374	£7.85
M32 EMC locknut		600464	£1.24

### Nickel-plated brass

Description	Additional Information	Order Code	List Price
M12 cable gland	For cables diameter 3-6.5mm	600701	£1.74
M12 locknut		600368	£0.11
M16 cable gland	For cables diameter 5.5-10mm	600760	£1.84
M16 locknut		600361	£0.18
M20 cable gland	For cables diameter 8-13mm	600761	£2.41
M20 locknut		600362	£0.27
M25 cable gland	For cables diameter 11-18mm	600762	£4.12
M25 locknut		600363	£0.42
M32 cable gland	For cables diameter 15-21mm	600763	£7.73
M32 locknut		600364	£0.50

### Grey plastic

Description	Additional Information	Order Code	List Price
M12 cable gland	For cables diameter 2-6.5mm	600790	£0.30
M12 locknut		600398	£0.05
M16 cable gland	For cables diameter 4-10mm	600680	£0.34
M16 locknut		600391	£0.06
M20 cable gland	For cables diameter 6-12mm	600681	£0.40
M20 locknut		600392	£0.06
M25 cable gland	For cables diameter 9-16mm	600682	£0.50
M25 locknut		600393	£0.07
M32 cable gland	For cables diameter 10-21mm	600683	£1.08
M32 locknut		600394	£0.14

### Black plastic

Description	Additional Information	Order Code	List Price
M12 cable gland	For cables diameter 2-6.5mm	600840	£0.30
M12 locknut		600850	£0.05
M16 cable gland	For cables diameter 4-10mm	600841	£0.34
M16 locknut		600851	£0.06
M20 cable gland	For cables diameter 6-12mm	600842	£0.40
M20 locknut		600852	£0.06
M25 cable gland	For cables diameter 9-16mm	600843	£0.50
M25 locknut		600853	£0.07
M32 cable gland	For cables diameter 10-21mm	600844	£1.08
M32 locknut		600854	£0.14

## W series – Terminal range



Weidmüller's W series terminals, with screwclamp connection technology, have set the standard. With many advantages, the W series remains market leader and is unsurpassed.

The W series offers solutions for conductor cross-sections from 0.06 to 240mm<sup>2</sup> and for all common electrical functions.

Another advantage is the choice of plug in (ZQV) or screw in (WQV)

cross connections within one modular terminal. It brings considerable time savings compared to all other screw terminals on the market.

Thanks to the patented design of the W series screw connection technology, it is possible for two conductors of the same cross-section to be connected in one clamping point without difficulty.

## W series – Feed through terminals 2.5 to 35mm<sup>2</sup>



Type	V	A	Size (mm)			Conductor Size (mm <sup>2</sup> )
			W	D	H	
WDU 2.5	800	24	5.1	60	47	0.05 to 4
WDU 4	800	32	6.1	60	47	0.13 to 6
WDU 6	800	41	7.9	60	47	0.08 to 10
WDU 10	1000	57	9.9	60	47	1.31 to 16
WDU 16/ZA	1000	76	11.9	60	63	1.5 to 25
WDU 35/ZA	1000	125	16	60	63	2.5 to 50

### Features

- Same contour design from 2.5 to 10.0mm<sup>2</sup>
- Conductor sizes from 0.05 to 240mm<sup>2</sup>
- Screw or plug in cross connections
- Wemid insulating material: UL 94 V0
- Thermally stable to 120°C
- Halogen, cadmium and phosphor free
- Wide range of European and International approvals including ATEX, IECEx, UL, CSA



Pluggable test adapters

Type	Beige		Blue	
	Order Code	List Price	Order Code	List Price
WDU 2.5	1020000000	£0.42	1020080000	£0.51
WDU 4	1020100000	£0.47	1020180000	£0.47
WDU 6	1020200000	£0.60	1020280000	£0.71
WDU 10	1020300000	£0.72	1020380000	£0.92
End plate	1050000000	£0.22	1050080000	£0.22
End plate/Partition	1050100000	£0.32	1050180000	£0.32
End bracket	1061200000	£0.44	—	—

Type	Beige		Blue	
	Order Code	List Price	Order Code	List Price
WDU 16/ZA	1028900000	£1.22	1028980000	£1.22
WDU 35/ZA	1028800000	£3.28	1028880000	£3.28
End plate/Partition	1050100000	£0.32	1050180000	£0.32
End bracket	1059000000	£1.62	—	—

### Pluggable test adapters

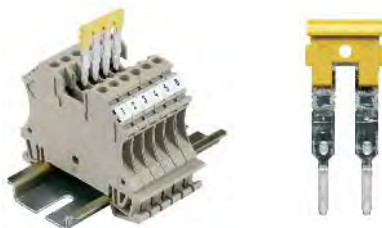
Type	Order Code	List Price
WTA 2 for use with WDU 2.5 to WDU 10	1632320000	£4.06

Double level terminals 2.5 to 4mm<sup>2</sup>Weidmüller 

Type	V	A	Size (mm)			Conductor Size (mm <sup>2</sup> )
			W	D	H	
WDK 2.5N	800	24	5.1	60	62	0.05 to 4
WDK 4N	800	32	6.1	60	64	0.13 to 6

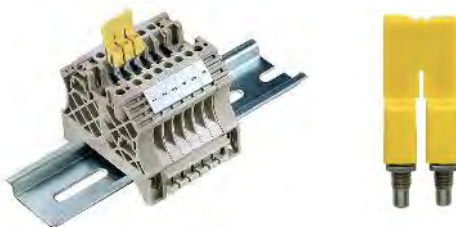
Beige			Blue	
Type	Order Code	List Price	Order Code	List Price
WDK 2.5N	1041600000	£1.26	1041680000	£1.26
WDK 4N	1041900000	£1.26	1041980000	£1.26
End plate - Double level	1084000000	£0.42	1084080000	£0.42
End bracket	1059000000	£1.62	—	—

## Pluggable cross connections (ZQV)

Weidmüller 

2 Pole			3 Pole		4 Pole		5 Pole		10 Pole	
Type	Order Code	List Price	Order Code	List Price	Order Code	List Price	Order Code	List Price	Order Code	List Price
WDU 2.5	1693800000	£0.16	1693810000	£0.32	1693820000	£0.45	1693830000	£0.60	1693880000	£1.25
WDU 4	1758250000	£0.21	1762630000	£0.31	1762620000	£0.48	—	—	1758260000	£1.03

## Screw cross connections (WQV)

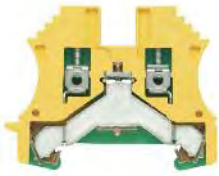
Weidmüller 

- Not suitable for use with compact designs WDK2.5N/4N

2 Pole			3 Pole		4 Pole		5 Pole		10 Pole	
Type	Order Code	List Price	Order Code	List Price	Order Code	List Price	Order Code	List Price	Order Code	List Price
WDU 2.5	1053660000	£0.53	1053760000	£0.74	1053860000	£0.95	1053960000	£0.89	1054460000	£2.27
WDU 4	1051960000	£0.42	1054560000	£0.74	1054660000	£0.94	1057860000	£1.20	1052060000	£2.18
WDU 6	1052360000	£0.53	1054760000	£0.80	1054860000	£1.04	1062660000	£1.33	1052260000	£2.22
WDU 10	1052560000	£0.52	1054960000	£0.80	1055060000	£1.04	—	—	1052460000	£2.84
WDU 16	1053260000	£0.56	1055160000	£0.80	1055260000	£1.09	—	—	1053360000	£3.59
WDU 35	1053060000	£1.26	1055360000	£1.79	1055460000	£1.57	—	—	1053160000	£3.88



## WPE 2.5 to WPE 35 earth terminals



Identical profiles from 2.5 to 35mm<sup>2</sup> with uniform end and partition plates (*included*). An unsurpassed combination with many advantages.

Their small size compared to the respective rated cross section makes the modular terminals, with their compact design, very popular.

Type	Size	Order Code	List Price
WPE 2.5	2.5mm <sup>2</sup>	1010000000	£1.66
WPE 4	4mm <sup>2</sup>	1010100000	£1.69
WPE 6	6mm <sup>2</sup>	1010200000	£1.78
WPE 10	10mm <sup>2</sup>	1010300000	£1.93
WPE 16	16mm <sup>2</sup>	1010400000	£2.65
WPE 35	35mm <sup>2</sup>	1010500000	£2.69

Home | About Us | News | Products | Downloads | Tech Support | Service>Returns | Engineering

# Have you had a look at our e-commerce website yet?

You can ...

- Check stock availability
- Log-in for latest prices
- Prepare quotations
- Place and track orders



## Log-in today for latest prices and stock availability

Addresses | My Account | My Orders | My Quotes | My Buying Lists | User Password | Newsletter Sign up

**www.lcautomation.com**

## W series – Fuse terminals

Overload and short-circuit protection.



WSI 4



WSI 4/2



WSI 6 LD



WSI 6



WSI 25



SAKS 5/35DB

## WSI 4

Voltage a.c./d.c.	Max Rating	Fuse Size (mm)	Conductor Size (mm <sup>2</sup> )	Order Code	List Price
500	12A	5 x 20	0.5 to 4	1886580000	£2.21
0.2A – fast fuse insert, includes end plate (pack of 10)				0430400000	£2.80

## WSI 4/2

Voltage a.c./d.c.	Max Rating	Fuse Size (mm)	Conductor Size (mm <sup>2</sup> )	Order Code	List Price
500	15A	6.3 x 32	0.5 to 4	1880430000	£1.54
0.1A – fast cartridge fuse (pack of 10)				0430300000	£2.80
End plate				1880450000	£0.15

## WSI 6 LD

Voltage a.c./d.c.	Max Rating	Fuse Size (mm)	Conductor Size (mm <sup>2</sup> )	Order Code	List Price
10-36	6.3A	5 x 20	0.5 to 10	1011300000	£5.70
30-70	6.3A	5 x 20	0.5 to 10	1012200000	£4.55
60-150	6.3A	5 x 20	0.5 to 10	1012300000	£4.55
250 a.c.	6.3A	5 x 20	0.5 to 10	1012400000	£6.04
0.5A – fast fuse insert (pack of 10)				0430600000	£2.80
0.63A – fast fuse insert (pack of 10)				0439000000	£2.80
1.0A – fast fuse insert (pack of 10)				0430700000	£2.80
1.6A – fast fuse insert (pack of 10)				0430800000	£2.10
2.0A – fast fuse insert (pack of 10)				0430900000	£2.10
2.5A – fast fuse insert (pack of 10)				0431000000	£2.10
3.15A – fast fuse insert (pack of 10)				0431100000	£2.10
4.0A – fast fuse insert (pack of 10)				0431200000	£2.10
5.0A – fast fuse insert (pack of 10)				0431300000	£2.10
6.3A – fast fuse insert (pack of 10)				0431400000	£2.10
End plate				1050000000	£0.22

## WSI 6

Voltage a.c./d.c.	Max Rating	Fuse Size (mm)	Conductor Size (mm <sup>2</sup> )	Order Code	List Price
500	6.3A	5 x 20	0.5 to 10	1011000000	£2.07
0.25A – fast fuse insert (pack of 10)				0430500000	£2.80
End plate				1050000000	£0.22

## WSI 25

Type	Voltage a.c./d.c.	Max Rating	Fuse Size (mm)	Conductor Size (mm <sup>2</sup> )	Order Code	List Price
1-pole no LED	690	32A	10 x 38	1.5 to 25	1966020000	£5.12
2-pole no LED	690	32A	10 x 38	1.5 to 25	1966090000	£10.25

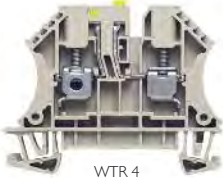
## SAKS 5/35DB

Voltage a.c./d.c.	Max Rating	Fuse Size	Conductor Size (mm <sup>2</sup> )	Order Code	List Price
400	57A	E 18/20A BL	1.5 to 16	0502100000	£14.24
20A D02 E18 fuse – E 18/20A BL (pack of 10)				0361300000	£15.00
25A D02 E18 fuse – E 18/25A GE (pack of 10)				0361400000	£15.00
35A D02 E18 fuse – E 18/35A SW (pack of 10)				0361500000	£27.30
50A D02 E18 fuse – E 18/50A WS (pack of 10)				0361600000	£26.20

## W series – Disconnect terminals



WTR 2.5



WTR 4

Modular disconnect terminals enable circuits to be quickly isolated from the supply so that, for example, maintenance or repair work can be carried out. The standard terminal has clamping screws and the STB version has an integrated test socket.

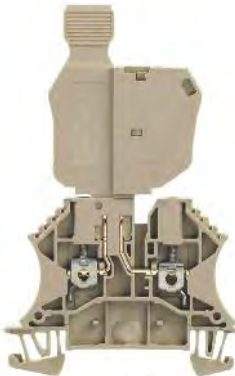
Terminal Type	V a.c./d.c.	A	Size (mm)			Conductor Size (mm <sup>2</sup> )
			W	H	D	
WTR 2.5	500	24	5.1	60	49	0.05 to 4
WTR 2.5 STB	500	24	5.1	60	49	0.05 to 4
WTR 4	400	32	6.1	60	48.6	0.22 to 6
WTR 4 STB	400	32	6.1	60	48.6	0.22 to 6

## WTR disconnect terminals

Type	Beige		Blue	
	Order Code	List Price	Order Code	List Price
WTR 2.5 with clamping screws	1855610000	£1.59	8731640000	£1.58
WTR 2.5 STB with test socket	1855620000	£1.30	8731660000	£1.45
WTR 4 with clamping screws	7910180000	£1.98	7910190000	£1.98
WTR 4 STB with test socket	7910210000	£2.18	7910220000	£2.24
End plate	1050000000	£0.22	1050080000	£0.21
Yellow disconnect plug	1833090000	£0.52	1833090000	£0.52

## ZQV pluggable cross connectors

Type	2 Pole		3 Pole		4 Pole		5 Pole		10 Pole	
	Order Code	List Price	Order Code	List Price	Order Code	List Price	Order Code	List Price	Order Code	List Price
WTR 2.5	1693800000	£0.16	1693810000	£0.32	1693820000	£0.45	1693830000	£0.60	1693880000	£1.25
WTR 4	1758250000	£0.21	1762630000	£0.31	1762620000	£0.48	-	-	1758260000	£1.03



WTR 2.5/SI

Terminal Type	V a.c./d.c.	A	Size (mm)			Conductor Size (mm <sup>2</sup> )	Fuse Size
			W	H	D		
WTR 2.5/SI	400	6.3	5.1	60	97.5	0.05 to 4	5 x 20
WTR 2.5/SI LD 36V with LED	10-36	6.3	5.1	60	97.5	0.05 to 4	5 x 20
WTR 2.5 without isolator	30-70	24	5.1	60	49	0.05 to 4	5 x 20

## WTR disconnect terminals with pluggable fuse holders

Type	Order Code	List Price
WTR 2.5/SI without LED	1763940000	£3.33
WTR 2.5/SI LD 36V with LED	1763950000	£4.21
WTR 2.5 without isolator	8731700000	£1.05
35-70V – SIHA 3 fuse holder	7921580000	£3.42
60-150V – SIHA 3 fuse holder	7921590000	£3.42
140-250V – SIHA 3 fuse holder	7921600000	£3.42
End plate	1050000000	£0.22

## Markers for use with WDU 2.5 to WDU 35



Description	Pack Qty	WDU 2.5, 10, 16 and 35 – DEK5		WDU 4 – DEK6		WDU 6 – DEK8	
		Order Code	List Price	Order Code	List Price	Order Code	List Price
1-50 FW	500	0473460001	£15.95	0468660001	£15.95	1653340001	£25.40
51-100 FW	500	0473460051	£15.95	0468660051	£15.95	1653340051	£25.40
101-150 FW	500	0473460101	£15.95	0468660101	£15.95	–	–
151-200 FW	500	0473460151	£15.95	0468660151	£15.95	–	–
201-250 FW	500	0473460201	£15.95	0468660201	£15.95	–	–
251-300 FW	500	0473460251	£15.95	0468660251	£15.95	–	–
301-350 FW	500	0473460301	£15.95	0468660301	£15.95	–	–
351-400 FW	500	0473460351	£15.95	0468660351	£15.95	–	–
401-450 FW	500	0473460401	£15.95	0468660401	£15.95	–	–
451-500 FW	500	0473460451	£15.95	0468660451	£15.95	–	–

## DIN terminal rails



## DIN terminal rails

Description	Material	Material Thickness	Length	Order Code	List Price
TS 35 x 7.5 unslotted	Steel	1mm	2m	0383400000	£3.18
TS 35 x 7.5 slotted (M5)	Steel	1mm	2m	0514500000	£3.37
TS 35 x 7.5 slotted (M6)	Steel	1mm	2m	0514570000	£3.37
TS 35 x 15 unslotted	Steel	2.3mm	2m	0498000000	£7.74
TS 35 x 15 slotted (M5)	Steel	1.5mm	2m	0236500000	£5.47
TS 35 x 15 slotted (M6)	Steel	1.5mm	2m	1805980000	£5.47



## Terminal rail support

Description	Thread	Order Code	List Price
TSTW5/M5	M5	0178100000	£1.34
TSTW5/M5 galvanised	M5	1779100000	£1.14
TSTW6/M6	M6	0164000000	£1.45

Note: TSTW terminal rail supports are used for angled fixing of terminal rails at an angle of 35°.

## EMC shield rails and accessories



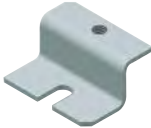
### EMC shield rail

#### Technical specification

Dimensions . . . . . h75 x w21 x L1173mm  
Number of shield points . . . . . 46

Description	Order Code	List Price
EMC shield rail; 1155mm long	346813	£9.24
Bracket for mounting the EMC shield rail above	346814.0010	£4.10

EMC Mounting  
Bracket -  
346814.0010



### EMC shield rail with cable fixing

#### Technical specification

Dimensions . . . . . h15 x w32 x L1155mm  
Number of shield points . . . . . 55

Description	Order Code	List Price
EMC shield rail with cable fixing; 1173mm long	346812	£18.65
Bracket for mounting the EMC shield rail above	346860.0002	£11.53



EMC Mounting  
Bracket -  
346860.0002



EMC Shield Clamp  
330089



### Shield and cable clamps

Description	Order Code	List Price
<b>Shield clamps</b>		
Shield clamp; for up to 12mm cable	330089	£0.28
Spring shield clamp; for 12–20mm cable	330071	£2.70
Spring shield clamp; for 20–30mm cable	330072	£2.96
Spring shield clamp; for 30–50mm cable	330073	£2.92
<b>Clamping options</b>		
Cable clamp; for 8–12mm cable	331000	£2.20
Cable clamp; for 12–16mm cable	331001	£2.31
Cable clamp; for 16–22mm cable	331002	£2.85
Cable clamp; for 34–40mm cable	331003	£3.26
Cable clamp; for 52–58mm cable	331004	£5.35



We supply high quality products from these world leading suppliers . . .



[www.lcautomation.com](http://www.lcautomation.com)