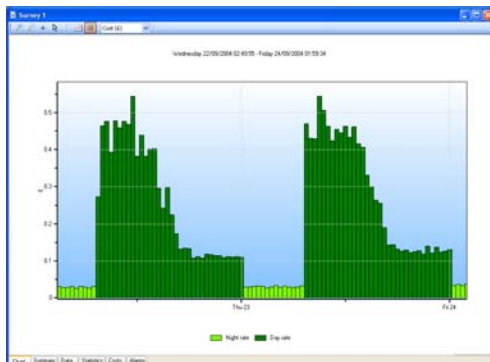


# SPCmini

## ELECTRICAL ENERGY PROFILE LOGGER

- ✓ **Low cost**
- ✓ **Simple to use**
- ✓ **Bluetooth® comms**
- ✓ **Includes PC software**
- ✓ **£329.00 complete!**



The SPCMini and its dedicated PC software package 'PowerPackPro' combine new technology and years of experience into an unbeatable low-cost package.

It has a large clear display, a massive 'Flash' memory and set-up and data download is via an integrated Bluetooth® communication chip, compatible with virtually any PC running Windows. The SPCMini is also extremely versatile and will provide accurate results on loads as small as 1 amp, right up to a maximum of 600 amps. The logging interval is fully adjustable from 1 second all the way to 30 minutes for ultra-long-term surveys.

The SPCMini is easy to use – clip it on, check the load with the on-board display, set it to log, press the start button and you're done! It's also clever – it won't overwrite any previous surveys without warning you, and the logger electronics auto-ranges to ensure the highest levels of measurement accuracy at all times. Connection to the PC is via Bluetooth® – just like a mobile phone – so there's no need to plug cables into hard-to-reach sockets.

The 'PowerPackPro' PC software package has been developed specifically for the SPCMini. It's a 'task oriented' package, so even if you are not an expert in electrical energy it will always guide you in the right direction so that you will achieve accurate reporting first time, every time. It provides full set-up and control for the SPCMini allowing you to define your survey period and/or data storage rate. It also automatically checks the SPCMini battery condition and clock settings to warn you if there is any problem. It also warns if data which has not been downloaded is about to be overwritten.

Once the data has been downloaded for the logger, PowerPackPro does a lot more than simple graphing. The graphs are fully 'zoomable' in both axes, and have automatic scaling so your results are always effectively presented. Our unique 'Data Logging' wizard ensures that the energy values (kWh) that are derived from the SPCMini are always as accurate as possible, and also include all relevant set-up information on any reports that are created.

The integrated energy costing capability allows multiple multi-rate tariffs to be entered, converting load profiles into accurate cost profiles, as well as enabling tariff comparisons to be made with real data.

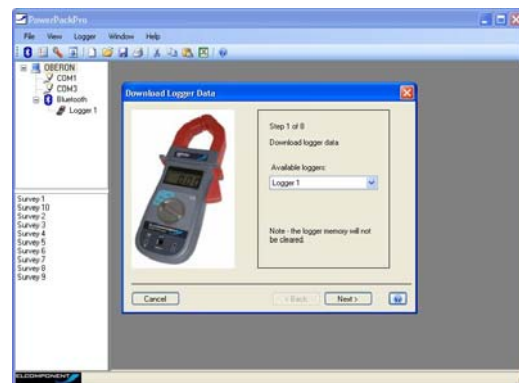
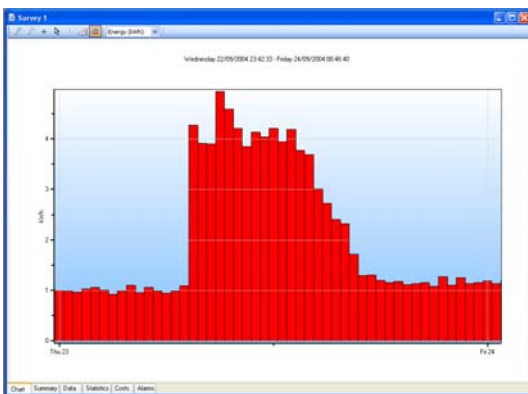
Specification		Notes
Connection	Single Channel Current Logger	
Measured Parameters	Amps – 2 Scales (autoranging) 1A – 600A	
Derived Parameters	kW, kWh, Cost	
Accuracy	+/- 1% of measurement +/- 0.5% of Scale	
Storage Rate	1 second to 30 minutes	
Storage Capacity	1 minute for 1 month	45000 records
Memory	Flash (non-volatile)	
Battery Life:	Minimum 2 months logging	PP3 Alkaline
Display	3.5" digit LCD	
Software	PowerPackPro	Requires min: Pentium III with SVGA & Bluetooth®. Win XP recommended

#### PC Specification:

The SPC Mini has a large memory capacity and utilises Bluetooth as its communication and data transfer protocol. A PC of the following minimum specification is required to make best use of the product's capabilities.

- Windows:** Windows XP, Home or Professional
- Processor:** Pentium 4 or Centrino mobile 2.0 GHZ+
- RAM:** 256MB
- Display:** 32 bit colour 1024 x 768 minimum
- Bluetooth:** Pre-installed or via unused USB port.

A lower spec PC may provide satisfactory performance, but Bluetooth pairing will take longer, and the graphing capability, particularly with larger surveys will be slower. PCs running W2000 will also function with the SPC Mini and PowerPackPro, as the user's discretion.



<b>Kit Contents</b>	<b>SPCmini Logger, PowerPackPro software, PP3 Battery</b>
---------------------	---

Description	Notes	Price
SPCmini		£329.00
Cable Splitter		£29.00
Accessory Kit	Bluetooth Dongle/Carry Case	£25.00



LC Automation Ltd, Duttons Way, Shandsworth Business Park,  
Blackburn, Lancashire. BB1 2QR

T: 0870 8501708 F: 0870 8501709 E: sales@lca.co.uk