

Plastic enclosures KS

Fully insulated enclosures to VDE 0100, paragraph 6.2, of fibreglass-reinforced, unsaturated polyester, self-extinguishing to ASTM D 635 and UL 94-V0, withstanding temperatures of between -30 °C and +100 °C, dyed light grey throughout, in a shade similar to RAL 7032 to DIN 43 656; suitable for overpainting.

Standard threaded brass inserts M8 x 15 in the rear panel for direct wall mounting of the enclosure from behind or for the use of wall mounting brackets. Press-fitted C rails in the enclosure to accommodate infinitely variable mounting plate adjustment brackets KS 1481.000 and KS 1491.000, allowing you to create several mounting levels. Double seal at the top and bottom edge of the door in all enclosures, thanks to a built-in rain protection strip of hard PVC with co-extruded PVC sealing lip.

German patent no. P 34 40 899
European patent no. P 0 180 825
with validity for BE, FR
US patent no. 4,665,654
Japanese patent no. P 1 659 174

Plastic enclosures KS have the following approvals:

- UL (without viewing window)
- CSA (without viewing window)
- TÜV
- Germanischer Lloyd
- Norske Veritas
- Russian Maritime Register of Shipping
- Lloyds Register of Shipping
- Bureau Veritas
- VDE

Plastic enclosures KS					
Width mm	Height mm	Depth mm	Model No. KS w/o viewing window	Model No. KS w. viewing window	Page
200	300	150	1423.600	–	88/89
250	350	150	1432.600	–	
300	400	200	1434.600	–	
400	400	200	1444.600	1448.600	
400	600	200	1446.600	1449.600	
500	500	300	1453.600	1454.600	
600	600	200	1466.600	1467.600	
600	800	300	1468.600	1469.600	90/91
800	1000	300	1480.600	1479.600	
1000	1000	300	1400.600	–	



Rittal plastic enclosures KS: The alternative for all situations where special protection is required, e.g. for external siting or in aggressive ambient conditions.

Fitted as standard with universal mounting aids, such as press-fitted rows of inserts, in the enclosure and door.





1 Press-fitted C rails in the enclosure to accommodate infinitely variable mounting plate adjustment brackets KS 1481.600 and KS 1491.600, allowing you to create several mounting levels.

2 Mounting plate secured on screw-in studs in threaded brass inserts M8 x 12.5, for easy installation and removal.

3 Prepunched guide bushes in the rear wall of the enclosure for drilling without marking out; direct screw-fastening of the enclosures from the front.

4 Fully insulated enclosure of fibreglass-reinforced, unsaturated polyester.

5 Mounting plate of 2 – 3 mm sheet steel, zinc-plated.

6 Door lock with water-proof double-bit 3 mm lock insert to DIN 43 668 of fibreglass-reinforced polyamide. May be exchanged for type E lock inserts, see page 942.

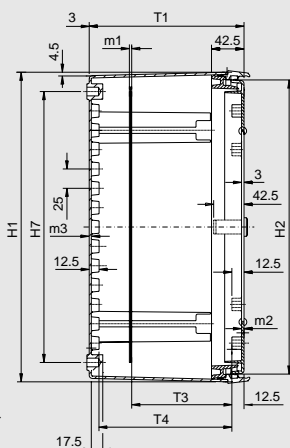
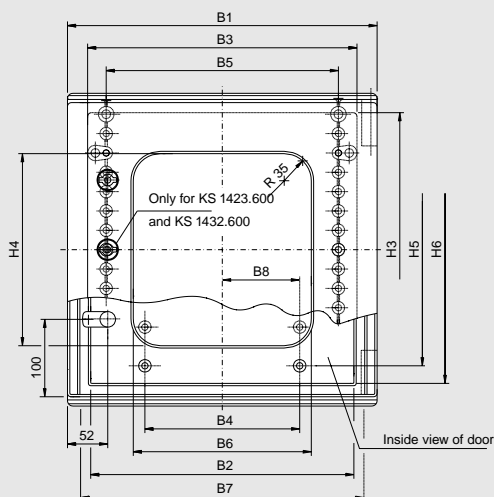
7 Double seal at the top and bottom edges of the door in all enclosures, thanks to a built-in rain protection strip of hard PVC with co-extruded PVC sealing lip.

8 All-round foamed-in PU seal in the moulded U-section of the door.

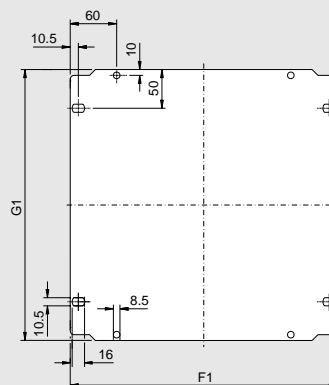
9 Press-fitted mounting inserts in the door and rear panel of the enclosure serve as a mounting aid for attaching cable trunking and cross rails, and for direct screw fastening using threaded inserts.

10 Enclosures with locking rod (see page 90/91) have additional door reinforcement.

11 KS 1400.600 additionally with centre bar in the enclosure, which may be dismantled.



Mounting plate



KS 1423.600 and KS 1432.600 with only one cam lock in the centre

B7 = Separation width for wall fixing hole
H7 = Separation height for wall fixing hole

Model No.	B1	B2	B3	B4	B5	B6*	B7	B8	H1	H2	H3	H4*	H5	H6	H7	T1	T3	T4	m1	m2	m3	F1	G1
KS 1423.600	200	140	150	-	100	-	150	25	300	280	256	-	200	245	250	150	80 - 110/117	119	2.0	3.0	3.0	145	250
KS 1432.600	250	190	200	75	150	-	200	50	350	330	306	-	250	295	300	150	80 - 110/117	119	2.0	3.0	3.0	195	300
KS 1434.600	300	240	249	100	200	-	250	50	400	380	355	-	300	345	350	200	80 - 160/167	169	2.0	3.0	3.0	245	350
KS 1444.600 / KS 1448.600	400	340	348	200	300	230	350	100	400	380	354	250	300	345	350	200	80 - 159/166	168.5	2.5	3.2	3.2	345	350
KS 1446.600 / KS 1449.600	400	340	348	200	300	230	350	100	600	580	554	450	500	545	550	200	80 - 158/165	168	2.5	3.5	3.5	345	550
KS 1466.600 / KS 1467.600	600	540	548	400	500	430	550	200	600	580	554	450	500	545	550	200	80 - 158/165	168	2.5	3.5	3.5	545	550
KS 1453.600 / KS 1454.600	500	440	434	300	400	330	450	150	500	480	454	350	400	445	450	300	80 - 258/265	268	2.5	3.5	3.5	417	450

* Only for enclosures with viewing window

Supply includes:

Enclosure of solid all-round construction, r/h hinge, may be changed to the opposite side by inverting the enclosure (only with single-door models), mounting plate, all-round foamed-in PU seal in the door, double seal, on the top and bottom edges of the door (built-in rain protection strip), press-fitted C rails at the sides for infinitely variable mounting plate adjustment bracket.

	Packs of	without viewing window								with viewing window				Page
Width (B1) in mm		200	250	300	400	400	500	600	400	400	500	600		
Height (H1) in mm		300	350	400	400	600	500	600	400	600	500	600		
Depth (T1) in mm		150	150	200	200	200	300	200	200	200	300	200		
Model No. KS	1	1423.600	1432.600	1434.600	1444.600	1446.600	1453.600	1466.600	1448.600	1449.600	1454.600	1467.600		
Doors		1	1	1	1	1	1	1	1	1	1	1		
Weight (kg)		3.0	4.1	6.0	7.9	11.5	12.9	15.9	8.0	11.5	13.4	15.9		

Accessories for interior installation

Mounting plate adjustment brackets KS	4	1481.000	1491.000	1481.000	1481.000	1491.000	1481.000	965
Self-tapping screws SZ	300	2487.000				2487.000		969

Lock systems

Standard double-bit lock insert may be exchanged for type E lock inserts, see page 942 and type E plastic handle KS 1484.000 - see page 940

PLASTIC ENCLOSURES KS

Width: 200 – 600, height: 300 – 600



+ **Accessories:**

See page 876/877 or refer to index.

Material:

Enclosure and door:
Fibreglass-reinforced,
unsaturated polyester
Mounting plate:
KS 1423.600 – KS 1434.600:
Sheet steel 2.0 mm
KS 1444.600 – KS 1467.600:
Sheet steel 2.5 mm
For KS with viewing window:
Impact resistant 3.0 mm
glazed acrylic with all-round
rubber cable clamp strip

Surface finish:

Enclosure and door:
No after-treatment as plastic
is dyed similar to RAL 7032
Mounting plate: Zinc-plated

Protection category:

KS without viewing window:
IP 66 to EN 60529/10.91
Complies with NEMA 4x.
KS with viewing window:
IP 56 to EN 60529/10.91
Complies with NEMA 12.



Wall mounting bracket
For simple attachment directly
to the wall.
Model No. see page 962.

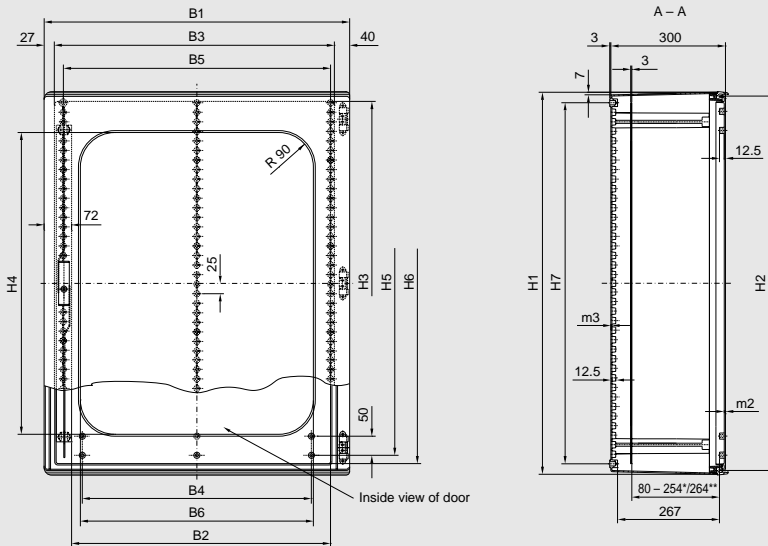


Mounting clip
For quick, secure fastening of
cable trunking etc.
Model No. see page 983.

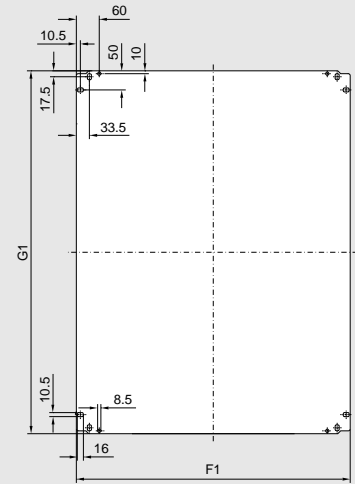


Threaded inserts M6
For simple attachment of
C rails, cable trunking etc.
Model No. see page 996.

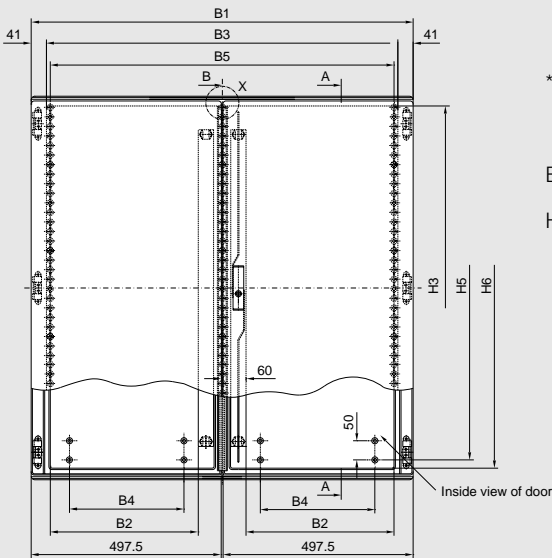
KS 1469.600 / KS 1479.600
KS 1468.600 / KS 1480.600 without viewing window



Mounting plate



KS 1400.600



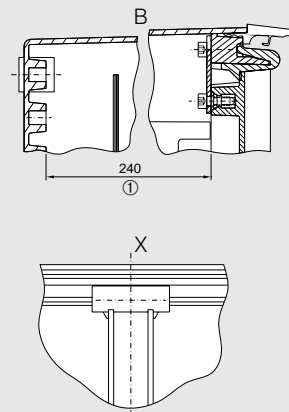
* Infinitely variable with mounting plate depth adjuster KS 1491.000, see page 965

** When mounting on studs directly on the threaded insert

B7 = Separation width for wall mounting hole
 H7 = Separation height for wall mounting hole

Detail B and X, screw-fastened centre bar for KS 1400.000

① Distance from mounting insert to centre bar



Model No.	B1	B2	B3	B4	B5	B6 ¹⁾	B7	H1	H2	H3	H4 ¹⁾	H5	H6	H7	m2	m3	G1	F1
KS 1468.600 / KS 1469.600	600	485	533	400	500	410	550	800	780	753	590	700	740	750	3.7	3.7	750	517
KS 1479.600 / KS 1480.600	800	685	733	600	700	610	750	1000	980	953	790	900	940	950	3.7	4.0	950	717
KS 1400.600	1000	387	918	300	900	-	950	1000	980	952	-	900	940	950	3.5	4.0	950	917

¹⁾ Only in enclosures with viewing window

Supply includes:

Enclosure of solid all-round construction, r/h door hinge, may be changed to the opposite side by inverting the enclosure (only with single-door models), mounting plate.
 All-round foamed-in PU seal in the door,

double seal on the top and bottom edges of the door (built-in rain protection strip), press-fitted C rails at the sides for infinitely variable mounting plate adjustment bracket.
 KS 1400.600 additionally with centre bar in the enclosure, which may be dismantled.

	Packs of	without viewing window			with viewing window		Page
Width (B1) in mm		600	800	1000	600	800	
Height (H1) in mm		800	1000	1000	800	1000	
Depth (T1) in mm		300	300	300	300	300	
Model No. KS	1	1468.600	1480.600	1400.600	1469.600	1479.600	
Doors		1	1	2	1	1	
Weight (kg)		26.0	39.0	50.0	25.0	33.0	

Accessories for interior installation

Mounting plate adjustment bracket KS	4	1491.000	1491.000	965
Self-tapping screws SZ	300	2487.000	2487.000	969

Lock systems

Standard double-bit lock insert may be exchanged for type E lock inserts – see page 942 and Ergoform-S lock system, KS 1490.000 – see page 939

PLASTIC ENCLOSURES KS

Width: 600 – 1000, height: 800 – 1000



+ **Accessories:**

See page 876/877 or refer to index.

Material:

Enclosure and door:
Fibreglass-reinforced,
unsaturated polyester
Mounting plate:
Sheet steel 3.0 mm
For KS with viewing window:
Impact resistant 3.0 mm
glazed acrylic with all-round
rubber cable clamp strip

Surface finish:

Enclosure and door:
No after-treatment as plastic
is dyed similar to RAL 7032
Mounting plate: Zinc-plated

**Protection category
to EN 60529/10.91:**

IP 66 for KS 1468.600
IP 56 for KS 1400.600,
KS 1469.600, KS 1479.600,
KS 1480.600

Single-door KS without viewing
windows comply with NEMA 4x.
Double-door KS and single-
door KS with viewing window
comply with NEMA 12.



KS lock system
May be exchanged for the
existing double-bit lock insert.
Model No. see page 939.



Pole clamp
For attachment to poles,
independent of floor support.
Model No. see page 962.



Enclosure heater
To prevent condensation.
Model No. see page 562/563.